

**10/90 Sproule St, Lakemba, NSW 2195**

**Sold - \$410,000**

Unit 2  1  1 



## A LIGHT FILLED APARTMENT

Located on the TOP level with a Northerly aspect is a sun drenched apartment with the most uplifting feel. The unit is immaculately presented and boast a modern eat-in-kitchen overlooking the lounge room. The lounge room has sliding glass doors leading to a balcony with distant, district views. There are 2 good size bedrooms, an impeccable bathroom and a LOCK UP GARAGE. The complex has SECURITY INTERCOM and is located 280 m to Wiley Park Reserve which hosts fitness equipment, picnic areas and duck ponds. Lakemba Railway Station and busy shopping strip is only 750 m away. This unit is a must see  
Total area: 97.5sqm, Strata Levies: approx. \$776.00 , Potential Rental: \$380pw.

### Open for Inspection

By Appointment.

All precaution has been taken to determine the accuracy of the above information however, all interested parties are to rely on their own inquiries and professional advice.

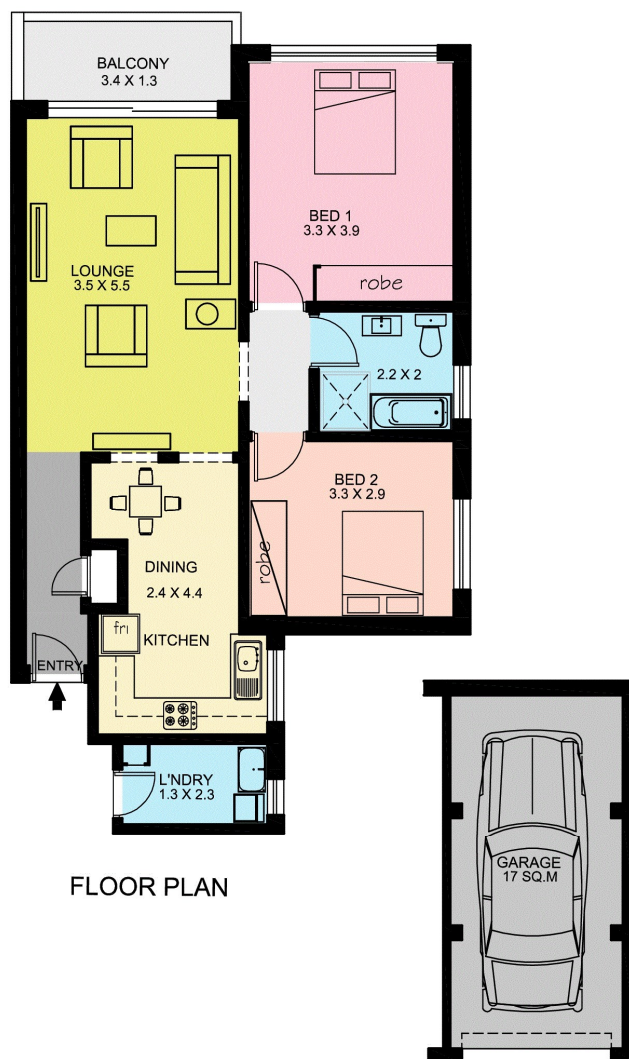
### Listed By

Luke Knapton  
Phone: (02) 97503999  
Mobile: 0419282758

Lee Knapton  
Phone: (02) 97503999  
Mobile: 0419 553 541



## Floorplan



### DISCLAIMER

THIS IS FOR MARKETING PURPOSES ONLY-  
DIMENSIONS ARE APPROXIMATE AND NOT TO SCALE  
INTERESTED PERSONS SHOULD MAKE THEIR OWN ENQUIRIES