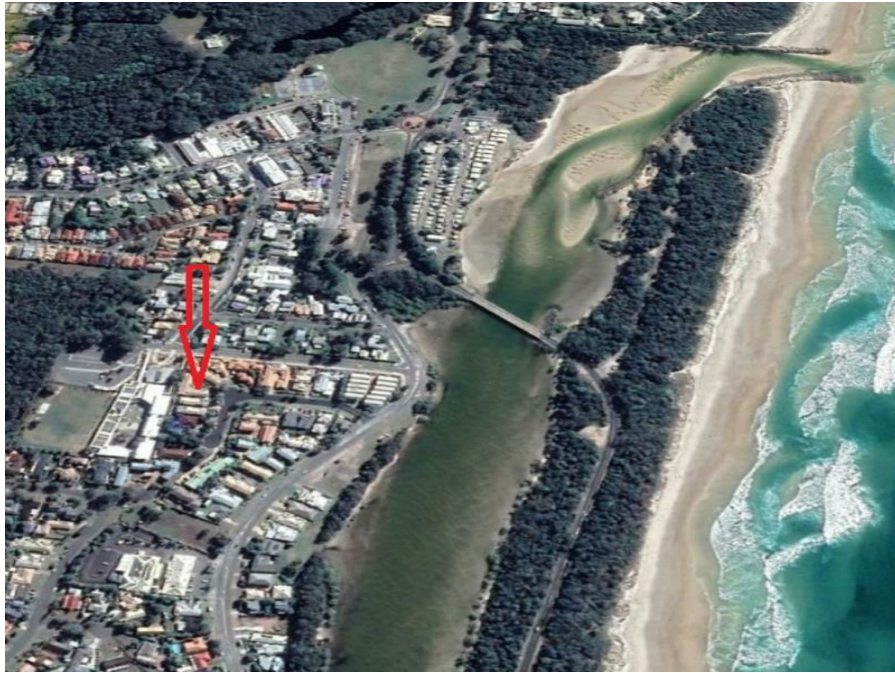


1/6 Hampton Ct, Pottsville, NSW 2489

Sold - 16/06/2020

Duplex 3  1  1 



Location, Location ,Location

This great little triplex is situated just so close to everything you need it's not funny. It really is just a stroll down the street to the cooling waters of the estuary, beach, shops restaurants, doctors, parks, transport, shopping and commercial centre.

This triplex is in reasonable condition but like any older home could do with a freshen up with new painting and new floor coverings.

The triplex features 3 bedrooms all with built-in robes, secure single lock up garage with internal access, large undercover rear patio leading onto a lovely front yard area, fans throughout, internal laundry, separate dining and lounge areas. This triplex is located in a very popular and quiet cul-de-sac on Hampton Court Pottsville Beach.

This property would make an excellent first home, holiday weekender or investment with a rental return of \$420-\$440 per week potentially achievable.

Properties in this position and price range don't last long on the market, so don't miss out on this one. Contact Wayne Moore on 0402 677401 to arrange your inspection.

Open for Inspection

By Appointment.

Listed By

Wayne Moore

Phone: (02) 6676 1666

