

25 Veron Rd, Schofields, NSW 2762

Sold - 8/07/2020

House 4 2 1



Team Hayden and Whiting are proud to showcase

In a fantastic location, perched on the high side of the street, this home features a large family/dining room that opens up onto the alfresco area and backyard, with plenty of room for the kids to play. The property includes four good sized bedrooms with built-in robes and the master bedroom featuring a walk-in robe and en-suite.

Open for Inspection

By Appointment.

Enviably Close to transport such as Schofields Station (1.2km approx), and only a short drive to popular amenities such as Rouse Hill Town Centre, Marsden Park Home Centre, IKEA, and Costco; this ideally located home won't last long!

- * 4 bedrooms all with built-in wardrobes
- * Master bedroom with ensuite and walk-in robe
- * Quality finishes and fixtures
- * Open plan kitchen, dining and family room
- * Ducted air conditioning
- * Security alarm system and intercom
- * Single lock-up garage with internal access
- * Gas Kitchen with ceaserstone bench-tops

For further information on this lovely home, please contact Matt Whiting 0407 883 111.

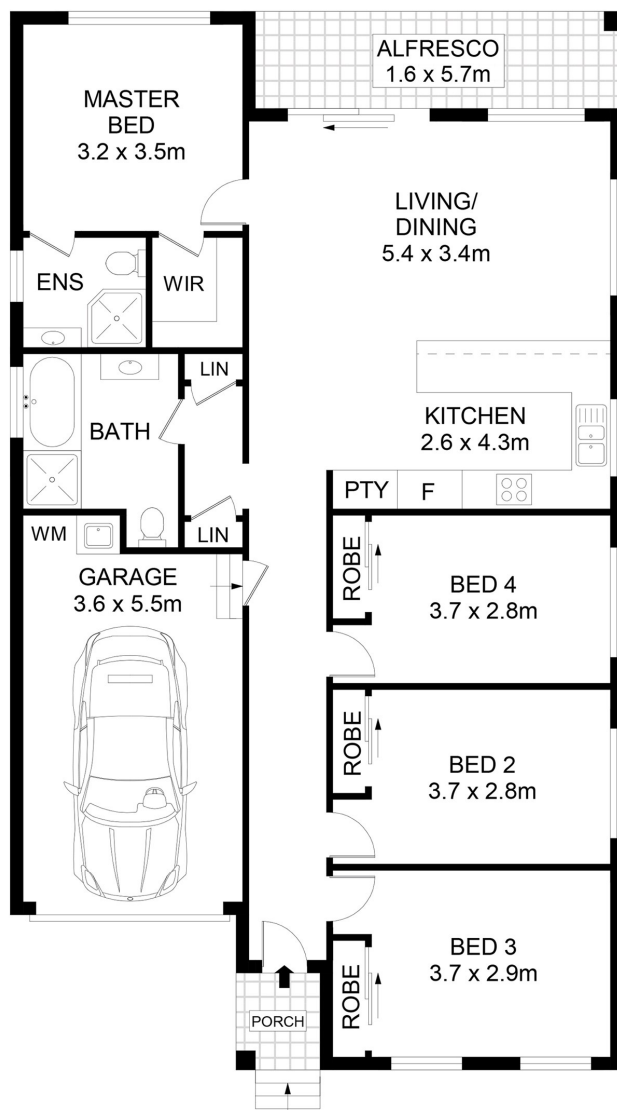
*We have obtained all information in this document from sources we believe to be reliable; however, we cannot guarantee its accuracy. Prospective purchasers are advised to carry out their own investigations.

Listed By
Matt Whiting

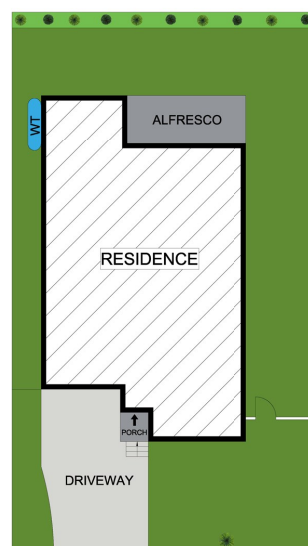
Glenn Hayden



Floorplan



FLOOR PLAN



SITE PLAN (NOT TO SCALE)

25 Veron Street Schofields

DISCLAIMER

DIMENSIONS ARE APPROXIMATE AND SHOULD ONLY BE USED AS A GUIDE
THEY ARE NOT TO SCALE AND NO LIABILITY BE ACCEPTED

