

308 Peel St, Tamworth, NSW 2340

Sold - 29/04/2020

Retail Shop



## PRIME CBD INVESTMENT

Great entry level Commercial Investment For Sale in the CBD of Tamworth. Surrounded by thriving businesses and in great condition with a glass shopfront, tiled flooring throughout, fully air conditioned and currently tenanted. Positioned between Brisbane Street and Bourke Street near the newly constructed NAB building.

**Open for Inspection**

By Appointment.

- Prime CBD location
- B3 Commercial Core Zoning
- Glass shop front, tiled flooring, Air conditioning, open plan shop
- Kitchenette and toilet, Rear access
- Total internal area: 72.5m<sup>2</sup>
- Tenant: CMC Barber
- Nett Income: \$18,846

### Listed By

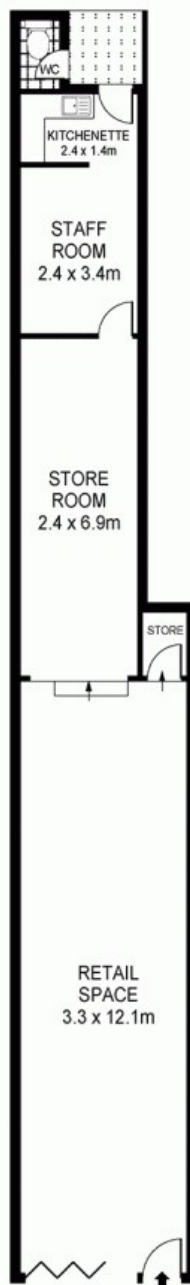
Gavin Knee  
Phone: (02) 67661411  
Mobile: 0427 669 151

Gavin Knee  
Phone: (02) 67661411  
Mobile: 0427 669 151



Floorplan

308 Peel St, Tamworth



**burke & smyth**  
commercial

Total Internal Area - 72.54m<sup>2</sup>

**PLEASE NOTE:**  
Scale is approximate and is to be used as a  
guide for indication of layout only.  
Direction of North symbol approximate only.