

23 Barlyn Ct, Horsley, NSW 2530**Sold - \$690,000**House 4  2  2 

Perfect Downsizer or Family Home

This single level four-bedroom home offers an easy-care lifestyle within a private cul-de-sac, perfect for the kids to explore and play. Featuring a centrally positioned kitchen overlooking the backyard, and the dining opening onto the paved entertainment area which is the perfect place for parties or barbecues.

Internal access from the remote garage provides easy access and convenience.

Located in a family friendly suburb and close to quality local schooling.

- Level easy care home in a quiet cul-de-sac
- Four bedrooms, the main to front with ensuite
- Kitchen overlooking backyard, perfect to watch the kids
- Open plan living and dining, with separate entry foyer
- Grassed backyard, room for the swings and trampoline
- Single remote garage, providing internal access
- Perfect first home or for those looking to rightsize
- Located close to Dapto Primary and High School
- Short walk to local bus stop with Dapto CBD close by
- Only 20 minutes to Wollongong and Shellharbour

Open for Inspection

By Appointment.

Listed By

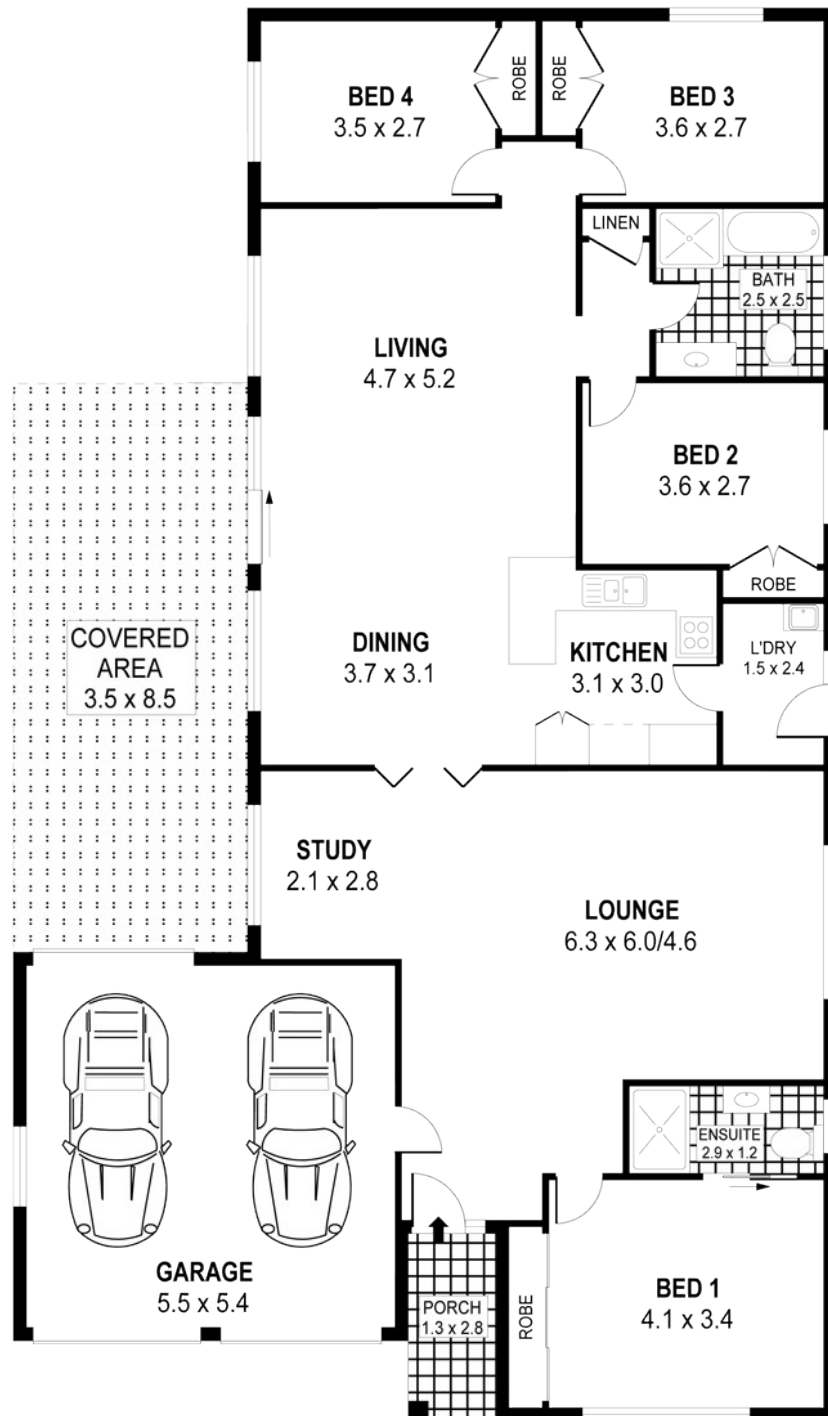
Sarah Ward

Phone: (02) 42857400

Mobile: 0400439602



Floorplan



HORSLEY

23 BARLYN COURT

INTERNAL FLOOR AREA APPROX: 155m²

TOTAL FLOOR AREA APPROX: 218m²

Disclaimer: Design Junkies Graphic Imagery whilst preparing this document for the use by The Real Estate Products Group Pty Ltd clients used our best endeavours to ensure that the information contained in this document is true and accurate, but accept no responsibility and disclaim all liability in respect of any errors, omissions, inaccuracies or mis-statements contained in this document. Prospective purchasers should make their own enquires to verify the information contained in this document.

ONE AGENCY
JD PROPERTY AGENTS