

35 Kingston Pde, Heatherbrae, NSW 2324

Sold - 24/07/2020

House 5  2  3 



## An immediate impression of style

This architect designed home features a continuous flow of interior space designed for people who love to entertain.

Set in a sort after quite location this home is on 2,752m2 of manicured lawns and hedges and is sure to impress.

Enter though a stylish front door and you will be impressed with the mix of casual elegance and simplicity that never goes out of style.

With a superbly appointed kitchen which stays clutter free thanks to plentiful draws, cabinets and walk in pantry, Bosch appliances which include a glass cook top, retractile range-hood, dishwasher and gleaming diamond gloss bench tops as well as a vast breakfast bar.

Both formal and informal living areas have a northerly aspect which allows for an abundant natural light and warmth. Generous dimensions ensure your large-scale furniture pieces will be right at home. Daikin inverta air conditioning is in the family room.

The spaciouly lavish master bedroom opens into a ensuite with a walk-in shower a seamless glass screens with crisp neutrals and a luxe look and feel as well as a walk-in robe.

The family bathroom has a tasteful pop of colour with Italian terrazzo floor to door height wall tiles.

The garage has internal access to the home with one remote double door, single door and a drive through access to the back garden.

Solar hot water, 2.55 kw solar system, spear point and enviro-cycle waste water management system irrigates the gardens and lawns

In summary, complete comfort and functionality is the big attraction for this magnificent home who awaits a new family.

**Open for Inspection**

By Appointment.

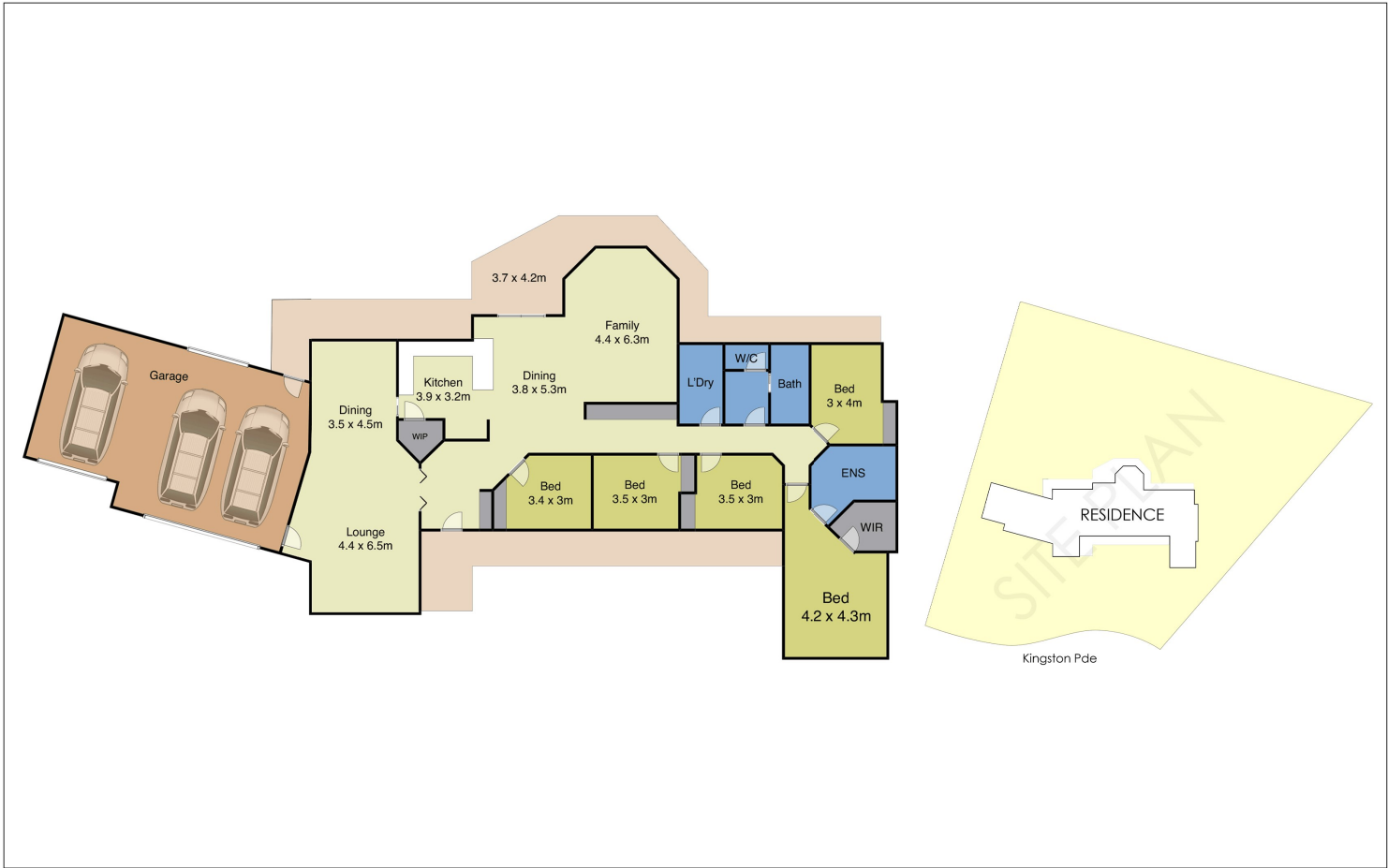
### Listed By

Tracy Jonovski

Mobile: 0418 216 275



Floorplan



 Raymond Terrace   Medowie	35 Kingston Parade, Heatherbrae		<b>NOT TO SCALE</b> <small>Disclaimer: This plan and measurements are for informational purposes only. We make no warranties or representations, express or implied, as to the accuracy of the data. Independent detail verification is recommended.</small>
---	---------------------------------	---	---