



**15 Crutchett Rd, Moonta, SA 5558****Sold - \$225,000**House 3  1 

### Great Value this modern home 1116m2 block

This 3 bedroom home is situated on a 1116m2 allotment with a rural outlook and within close walk to all facilities. This home offers a spacious lounge dining area and has reverse cycle split system air conditioning and ceiling fans throughout. The kitchen is central to the home and offers electric stove and range hood. The bathroom has separate shower, bath and vanity and the toilet is separate (not in bathroom). This home is fully fenced around the whole block and has a single carport. Well established front garden with a deck area and the rear of the home has a full length verandah and outside garden shed. This home would be an ideal first home or even a weekender with heaps of room for a huge shed. Inspection by appointment.

#### Open for Inspection

By Appointment.

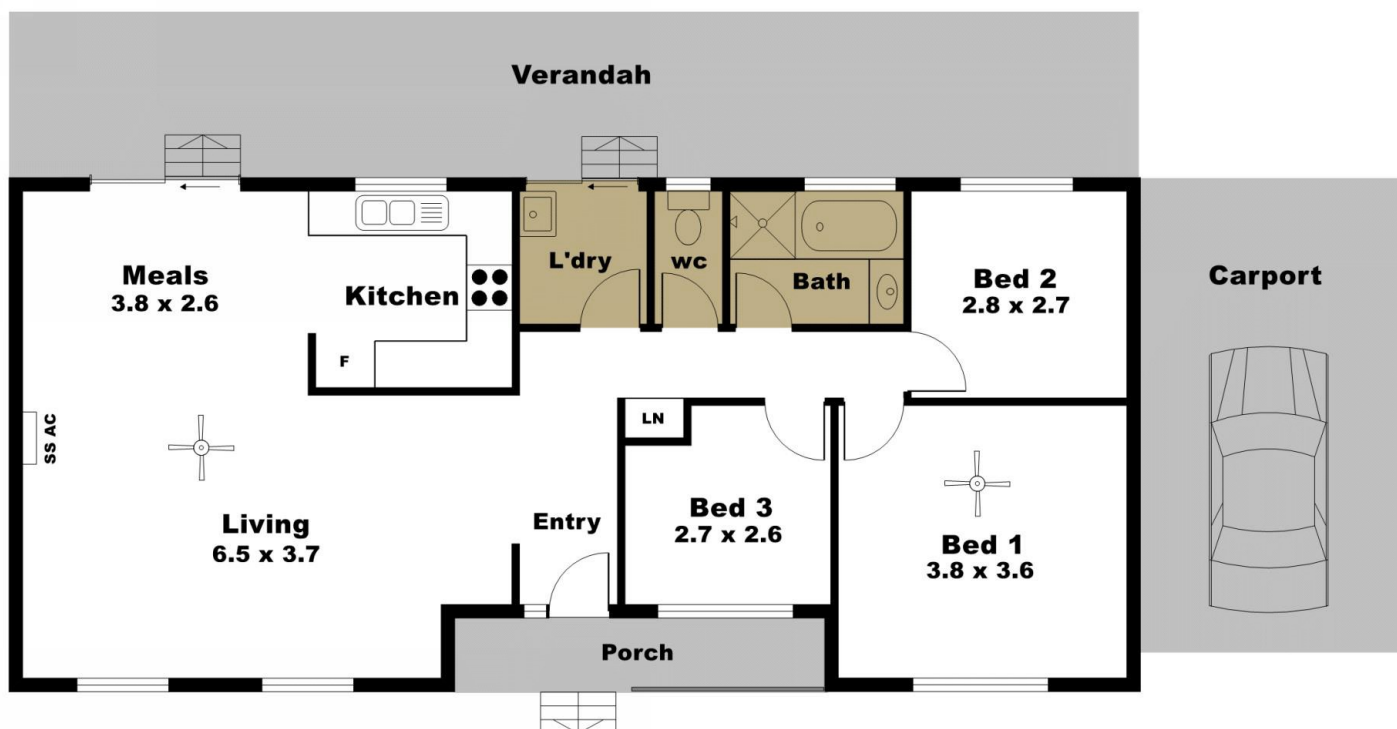
#### Listed By

The Office

Phone: (08) 8825 2555



## Floorplan



## 15 Crutchett Road North Moonta

Main Living	97
Porch	4
Verandah	33
Carport	22
<b>Total approx m2</b>	<b>156</b>

**CENTURY 21.**  
Yorke Peninsula

[C21.com.au/yorkepeninsula](http://C21.com.au/yorkepeninsula)  
P: 08 8825 2555

This floor plan is for illustrative purposes only. All dimensions, fittings and fixtures are approximate. m2 totals include exterior walls. No warranties or representations are given or intended by illustrator or agent. [www.floorplansandmore.com.au](http://www.floorplansandmore.com.au)

