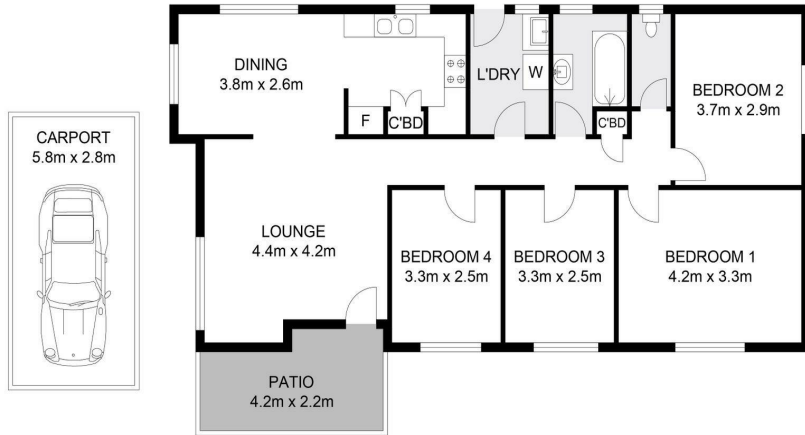


**15 Dean Cl, Goonellabah, NSW 2480**

**Sold - \$260,000**

House 4 1 1



0 1 2 3 4 5

Scale in meters, indicative only. Dimensions are approximate. All information contained herein gathered from sources we believe to be reliable. However we cannot guarantee its accuracy and interested persons should rely on their own enquiries.

INT : 97.6m<sup>2</sup>  
EXT : 8.2m<sup>2</sup>  
CARPORT : 16.2m<sup>2</sup>



**15 Dean Close, Goonellabah**



## AFFORDABLE HOME

Located in Goonellabah, this spacious home is very affordable giving first home buyers an opportunity to get out of the rent cycle and start paying off your own home. Currently tenanted, the property also makes an ideal investment, with current tenant paying \$305/week.

The home features 4 genuine bedrooms, separate lounge and dining areas with a renovated kitchen including stone benchtops.

The large backyard is fenced and ideal for the family pet, veggie gardens or place for the kids to play. Being such a large block – 859m<sup>2</sup>, the property has the potential for future shed or pool. Currently with a carport to the side and drive through access into the yard.

Such a handy location, being walking distance to Goonellabah Shopping Centre, Sport Complex and parks. Call today

**Open for Inspection**

By Appointment.

### Listed By

□ Peter Brown  
Phone: (02) 66212307  
Mobile: 0408666886

