

42 Elanora Rd, Kiama Heights, NSW 2533

Sold - \$3,250,000

House 5  3  2 



## Sold by Vitas Tulich

Overlooking the pristine blue water of Loves Bay and rolling green hills beyond, this luxurious waterfront reserve property is in a class of its own. Occupying one of the best positions in Kiama Heights, the property is impeccably renovated and offers privacy and tranquility in a picture-perfect coastal setting.

### Open for Inspection

By Appointment.

Wake up every morning to the most picturesque sunrises, watching the waves break in Loves Bay, enjoy the whales as they swim by and the cows graze on the adjoining farmland, and with direct access to the coastal walking track, it represents the ultimate coastal lifestyle. From the moment you step through the doors of this home, you will begin to appreciate its style and absolute quality throughout. Whether you are looking for room for the growing family, simply to entertain or invest, this home is sure to impress.

The property itself comprises of 5 generous sized double bedrooms, master with ensuite, 3 fresh modern bathrooms, Tasmanian Oak' timber flooring, open plan living with cathedral ceilings, Chef's kitchen with stone benchtops/splashback and quality appliances, two separate living areas, several outdoor entertainment areas, excellent storage throughout, built-in gas fireplace, several a/c units, work from home' office with NBN (FTTP), huge entertainment/rumpus room with a kitchenette/wet bar, 10m in-ground saltwater pool, double garage and double carport with extra clearance for RV or boat. With too many features to list, this property certainly warrants an inspection to completely appreciate all that is on offer.

Easy care gardens allow plenty of time to enjoy the abundant water activities which include: whale watching, rock fishing, diving/snorkeling, and Kiama's Coastal Walk' to Gerringong all at your back door and Easts Beach just a few minutes walk. With Sydney a short 90 minutes drive away, this really is the ultimate seaside location.

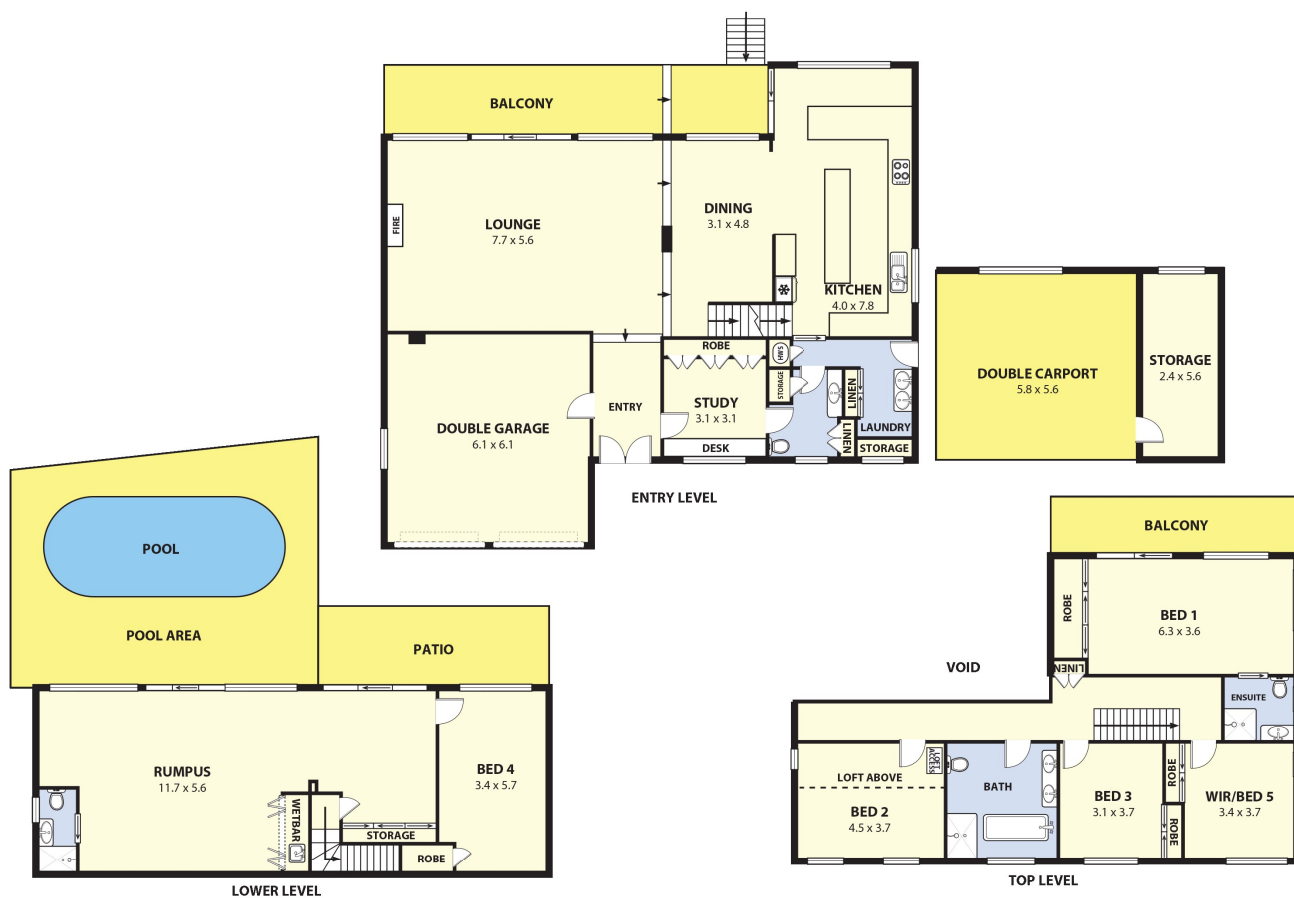
For further details please contact listing agent Vitas Tulich directly on 0403 547 354 or via email at [vitas.tulich@raywhite.com](mailto:vitas.tulich@raywhite.com).

### Listed By

Michele Lay  
Phone: (02) 4232 3300  
Mobile: 0409 461 756



## Floorplan



### 42 ELANORA RD, KIAMA HEIGHTS

Plans shown are for presentation purposes and are not part of any legal document or title and are subject to errors, omissions, inaccuracies and should not be used as sole and accurate reference. Particulars given are for general information only and do not constitute any representation on the part of the vendor or agent. No liability will be accepted.



Garage	37m <sup>2</sup>
Internal	350m <sup>2</sup>
Patio & Outdoor Space	153m <sup>2</sup>
<b>TOTAL SPACE</b>	<b>540m<sup>2</sup></b>

RayWhite