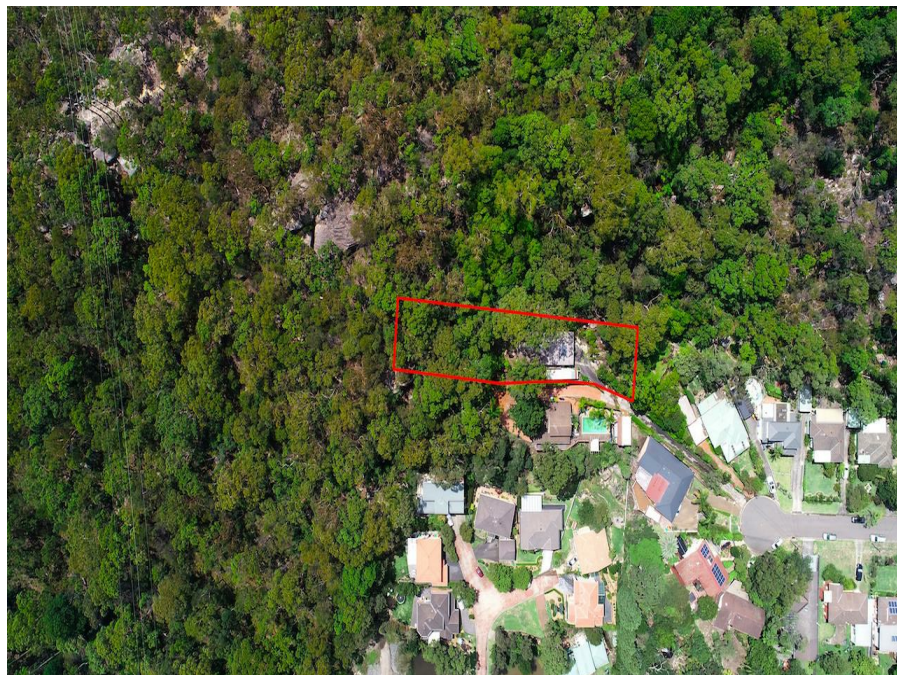


20 Deborah Cl, Mount Colah, NSW 2079

Sold - \$750,000

House 4  2 



BUILD YOUR DREAM HOME WITH AN AMAZING VIEW

This large, approx. 2,005 sqm block of land is ready to be transformed into a palatial family home with the most amazing views across the valley below.

Currently supporting a dated four bedroom, 2 bathroom home with a large lounge, kitchen/dining area and a wood fireplace, this property is ready for a new home that will take advantage of its elevated position.

Deborah Close is a quiet cul-de-sac within easy access to local shops, Westfield shopping centre, Mount Colah station, the Pacific Highway and the M1 motorway.

As expected, this property has already attracted interest prior to being advertised.

Open for Inspection

By Appointment.

Listed By

The Office

Phone: (02) 9482 3341

Jay Naidoo

