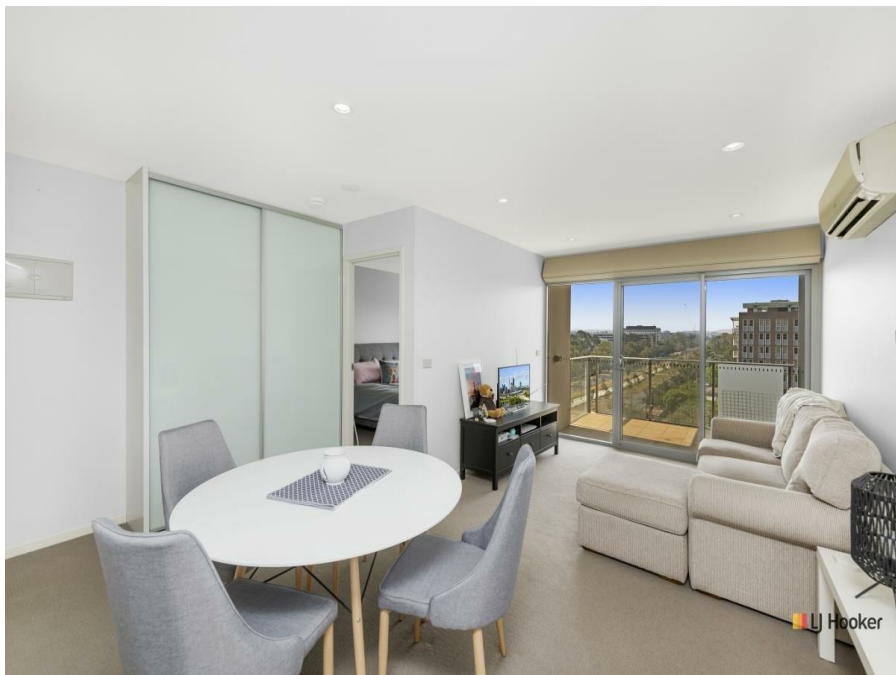


142/10 Ipima St, Braddon, ACT 2612

Sold - 20/04/2020

Apartment 1  1  1 



View From The Top!

Inspections will be conducted by private appointment ONLY. You must contact the agent to be allocated a specific time slot to inspect.

Open for Inspection

By Appointment.

Any auctions will also be conducted digitally and live streamed at the scheduled time and date.

<https://dickson.ljhooker.com.au/buying/ljh-covid-19-policy>

How often do you get offered a top floor, North-facing apartment in Braddon? Considering the rarity of a northerly aspect in this part of Canberra you'd have to assume not often. Prepare to be awash with natural light throughout the day, and enjoy sweeping views from Mt. Ainslie to Black Mountain.

Braddon is going from strength to strength and is one of Canberra's most popular suburbs. This comes as little surprise when you see what there is to offer here. There is a light rail stop right on your corner, so transport has never been easier. Of course there is Braddon itself, with its plethora of cafes, restaurants and boutique stores, as well as the CBD and ANU just a short walk away.

This also presents a valuable opportunity for property investors, with strikingly low vacancy and a current return of \$420 per week.

What's on offer:

- Spacious top floor apartment
- North-facing with panoramic views
- Walk-in robe
- Reverse cycle air-conditioning
- Secure basement parking

Walk to:

- Light rail
Lonsdale Street

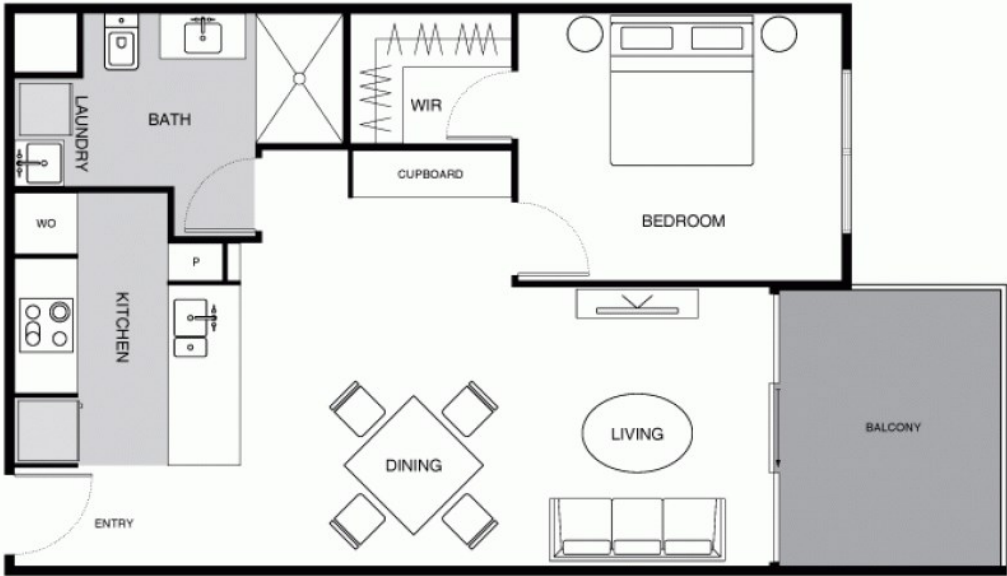
Listed By

Nic Salter-Harding



Floorplan

Floor Plan



THIS FLOORPLAN IS INDICATIVE ONLY. DIMENSIONS ARE APPROXIMATE. ALL INFORMATION CONTAINED IS GATHERED FROM SOURCES WE BELIEVE TO BE RELIABLE. WE CANNOT GUARANTEE ITS ACCURACY AND INTERESTED PARTIES SHOULD RELY ON THEIR OWN ENQUIRIES.