

39 Yarralumla Dr, Carlingford, NSW 2118

Sold - 29/02/2020

House 6 3 2



AUCTION 29th February at 1:30PM

SPACIOUS SIX BEDROOM HOUSE CLOSE TO JAMES RUSE HIGH, KINGS SCHOOL & TARA GIRLS

Located within the highly sought after Kingsdene Estate, this impressive home is the ideal family sanctuary with multiple entertaining areas, Balinese inspired saltwater pool, an open plan chefs kitchen as well as a home office/in law accommodation. It is in the catchment for Carlingford West Primary.

Open for Inspection

By Appointment.

Property Highlights:

- Six bedrooms , 3 full size bathrooms including master bedroom with ensuite.
- Modern Kitchen with Meile appliances and prep kitchen.
- Light filled interiors overlooking the Balinese inspired saltwater pool.
- Home office / in law accommodation with separate entry.
- Double garage with internal access.
- Air conditioning as well as alarm system.
- Huge under house storage/workshop.
- Located within close proximity to top Government & private schools including Carlingford West Primary & James Russe selective

**All information contained herein is gathered from sources we consider to be reliable. However, we cannot guarantee or give any warranty about the information provided. Interested parties must solely rely on their own enquiries.

Listed By

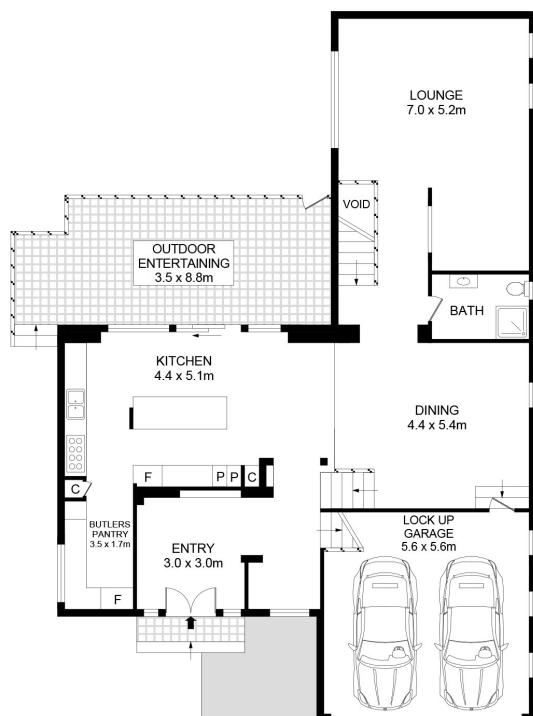
Bronwyn Smith

Phone: (02) 9899 9300

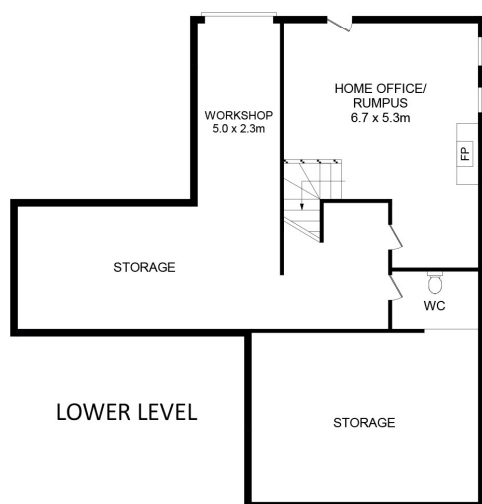
Mobile: 0414 367 564



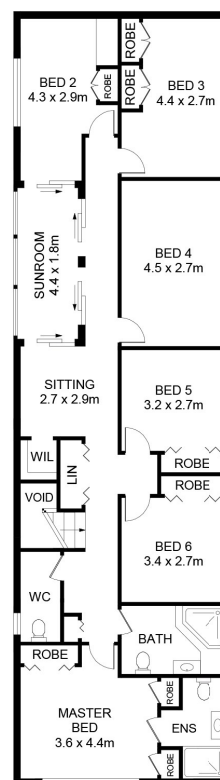
Floorplan



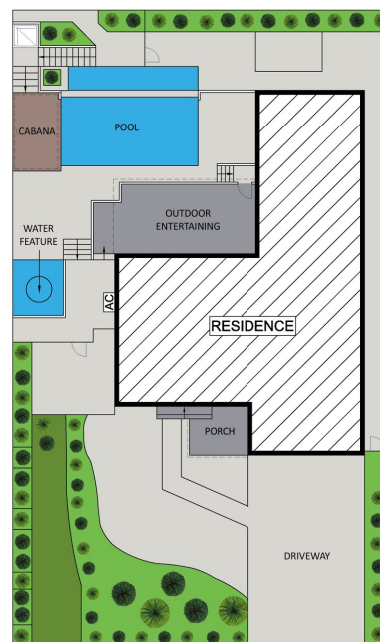
ENTRY LEVEL



LOWER LEVEL



UPPER LEVEL



SITE PLAN (NOT TO SCALE)

39 Yarralumla Drive Carlingford

DISCLAIMER

DIMENSIONS ARE APPROXIMATE AND SHOULD ONLY BE USED AS A GUIDE
THEY ARE NOT TO SCALE AND NO LIABILITY BE ACCEPTED

