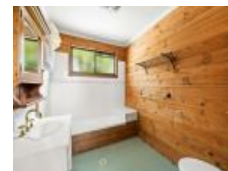


17 Sylvan Ct, Rangeville, QLD 4350

Sold - \$602,000

House 4  2 



Solid Home in Picturesque Rangeville – on 1,014m2 Allo

Positioned in a sought after pocket of Rangeville, this large family home offers four generous bedrooms, two with built-ins and the main bedroom offering a spacious walk-in-robe and two-way bathroom. This home offers a huge central lounge room plus an additional second living space with combustion wood heater. Its well-appointed large kitchen is perfect for a large family, plus a separate detached double lock up garage, all set on a low maintenance 1,014m2 allotment in this quiet cul-de-sac position. Walking distance to Picnic Point parks and local Rangeville State School - Don't miss your opportunity here - Inspect Today!

Open for Inspection

By Appointment.

Listed By
Craig Horncy

