

23 Lara Dr, Buderim, QLD 4556

Sold - 11/01/2021

House 4  3  3 



SOLD BY CRAIG PORTER

PRIME 2 ACRE - WALK TO MATTHEW FLINDERS ANGLICAN COLLEGE – BLUE CHIP BUDERIM PRECINCT

Open for Inspection

By Appointment.

After 20 great years of enjoying the country lifestyle in the heart of what is known as Buderim's Blue Chip small acreage precinct, the sellers are overseas bound and have put their awesome property up for immediate sale.

Loaded with the potential to add your own flair and touches, this one is perfect for the modern makeover. Boasting great bones and a versatile floor plan, with dual living potential too, you could let your imagination run wild.

Meticulously maintained throughout with plenty of space inside and out, including a separate 70m² shed with workshop, a 6.04 kW solar system with 28 panels, and two rainwater tanks (120,000 litres) as well as town water

The all useable 8,537m² block (or just over two acres) is elevated and captures beautiful cooling breezes with a country-style vista overlooking the tranquil setting.

Move-in prior to Christmas, enjoy for a lifetime.

What we love:

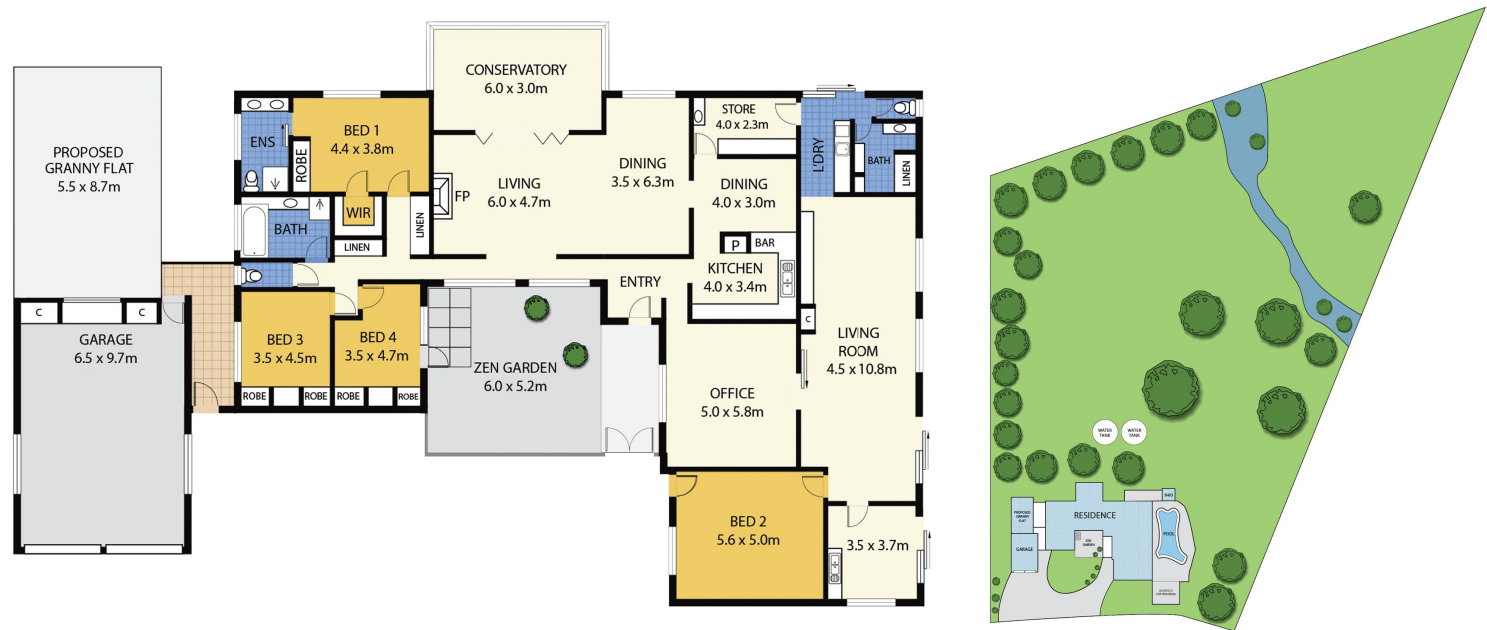
- Blue Chip position – walk to Mathew Flinders Anglican College
- All useable, elevated 8537m² (2 acres+) land
- Awesome opportunity for a modern makeover
- Town water as well as rainwater tanks
- 6.04 kW solar with 28 panels
- 70m² separate shed
- Dual living potential
- Sunshine Coast Uni and Buderim village – 3mins drive
- Move-in for Christmas

Listed By

Yasna Hawthorne
Phone: (07) 5444 4411
Mobile: 0418 544 406



Floorplan



ARTIST'S IMPRESSION ONLY: While every attempt has been made to ensure the accuracy of this floor plan areas and measurements of doors, windows, rooms and all other items are approximate and no responsibility is taken for any error, omission, or mis-statement. This plan is for illustrative purposes only and should only be used as such by any prospective purchaser.



LIVING:	370 m2
GARAGE:	63 m2
TOTAL:	433 m2
LOT SIZE:	8537 m2

23 Lara Drive, BUDERIM