

57 Peters Tce, Mount Compass, SA 5210

Sold - \$275,000

House 3 1 1



Affordable first home or investment property

Currently the cheapest home for sale in Mount Compass!
Nestled amongst new quality homes and a very relaxed community title of 3, is this partially renovated 70's residence offering superb yard space and fantastic value for money.

Open for Inspection
By Appointment.

Located walking distance from the vibrant town centre, Mount Compass Area School, Sports Associations and the Mount Compass Golf Course. Further facilities are accessible at neighbouring Towns; Willunga and McLaren Vale.

Boasting a pleasant view of mature pines and beautiful farmland, the home presents well with original pine floors. A family friendly floor plan with multiple living spaces and a stunning new kitchen. Beautiful big windows throughout allow amples of natural light to pour into the home. There are 3 sizable bedrooms, the master with a build in robe. And the partially renovated bathroom features a new shower and vanity, but could also benefit from further work.

Outside enjoy collecting fruit from the well established fruit trees at the rear. There's a good sized garden shed for all your tools and large rain water tank. Plenty of additional yard space either side of the home for outdoor activities.

This entry level price presents potential for your own improvements to the property (STCC). First time investors this entry level price allows for a potential 6% rental yield as the home was assessed at \$300 per week rent. The new *First Home Loan Deposit Scheme is still available offering 95% lend with no Lenders Mortgage Insurance (subject to lending criteria) allowing you to get into the property market sooner. Don't miss this one!

*Visit <https://www.nhfc.gov.au/what-we-do/fhlDs/eligibility/> to confirm eligibility.

All photos and text are for illustration purposes only and are not intended to be part of any contract.

Listed By
The Office
Phone: (08) 8556 6001

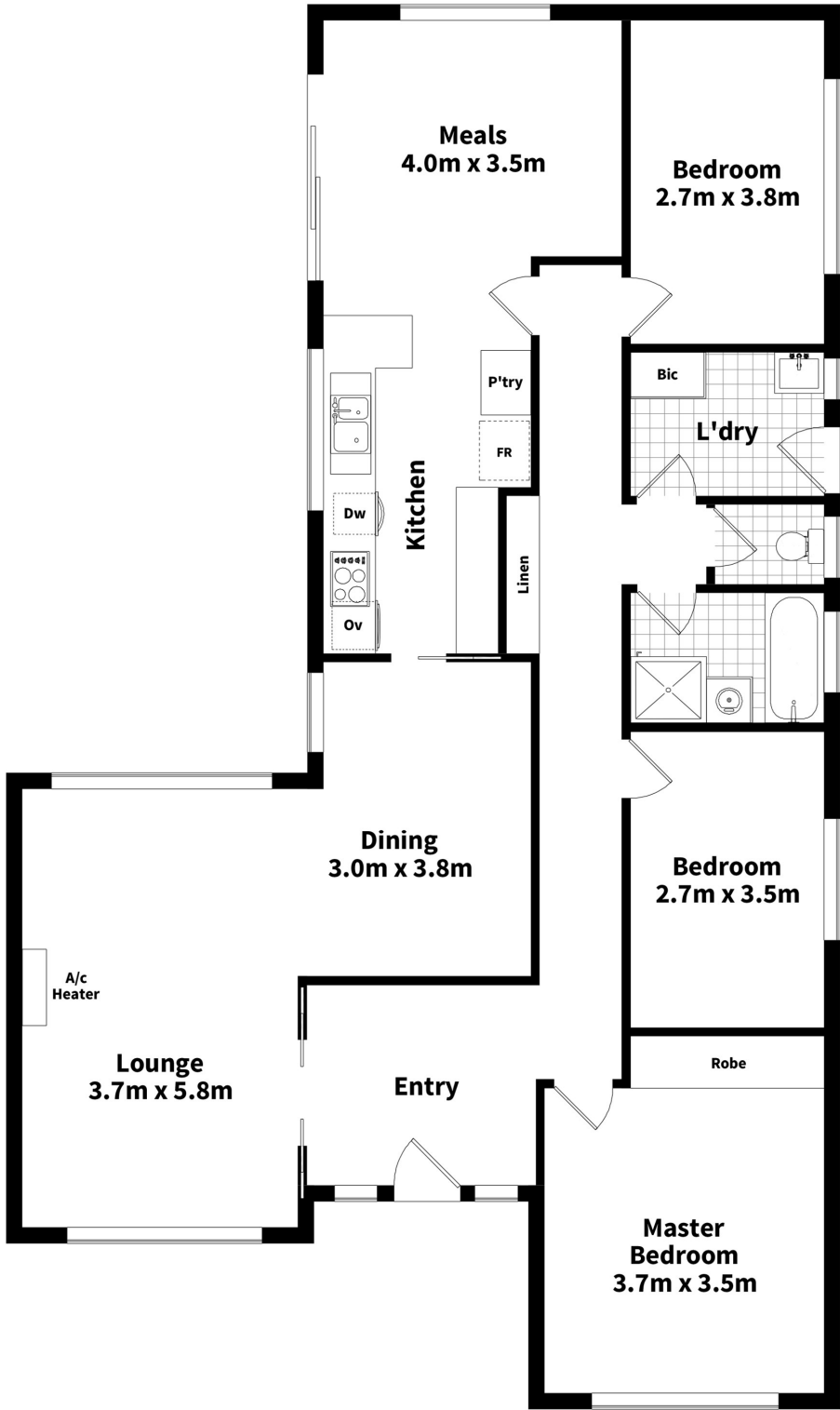
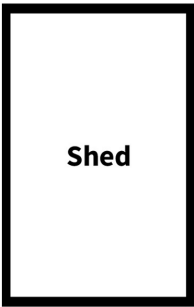
Shelley Bezuidenhout



Floorplan

Approximate Area - m2

Living	156.3
--------	-------



All measurements are approximate and for display purposes only

