

35 Elimatta Pl, Kiama, NSW 2533

Sold - \$800,000

Duplex 4  3  2 



## Central Torrens titled duplex

Sleek and contemporary in design this Torrens title duplex is still under warranty is just 2 year young. Offering a feeling of space and sophistication in an idyllic central coastal location it showcases free-flowing living spaces, secure level low maintenance yard, plenty of storage and flexible floorplan design.

### Open for Inspection

By Appointment.

This home comprises of 4 generously proportioned bedrooms, 3 complete bathrooms including ensuite to the master with walk-in, open plan kitchen/living area, split system a/c, beautiful plantation shutters throughout, study nook, great storage and secure double lock-up garage with internal access. Bathed in natural light this property creates a feeling of space complimented by a leafy reserve at the rear of this property.

Located right in the heart of Kiama less than 700 metres to Kiama's surf beach, train station, shops, caf/restaurants, pristine boat harbour, tennis courts, local markets and other amenities. With all these conveniences within walking distance from your front door, this really is the ultimate seaside address you have always dreamt of.

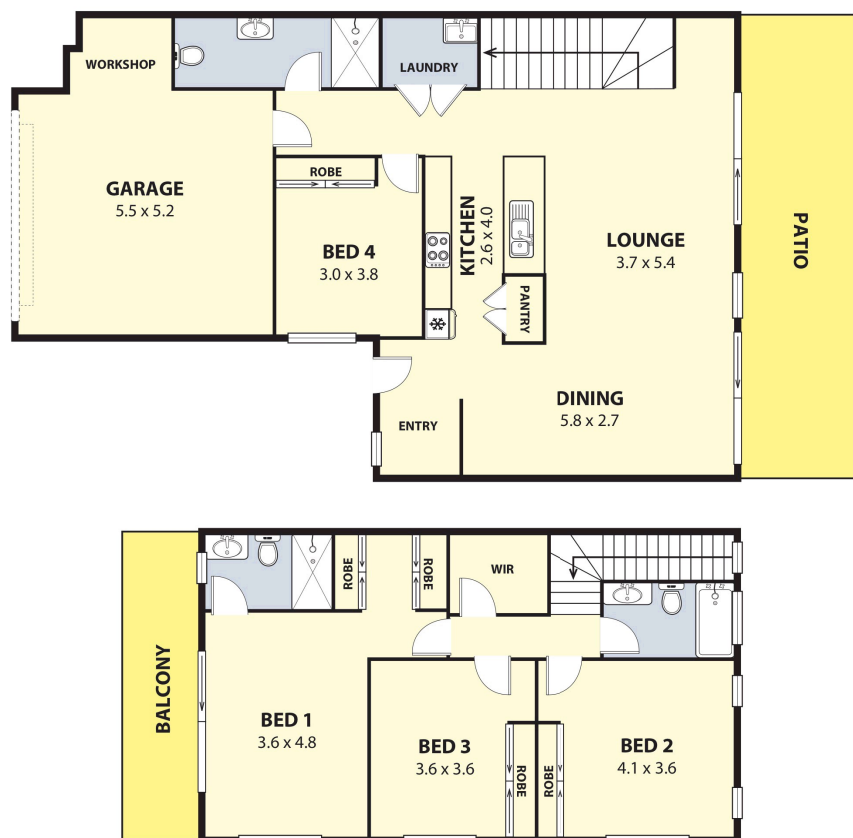
For more information or to organise a personal inspection please don't hesitate to call Robert Moore directly on 0402 047 414 or [robert.moore@raywhite.com](mailto:robert.moore@raywhite.com)

### Listed By

Robert Moore  
Phone: (02) 42323300  
Mobile: 0402 047 414



## Floorplan



### 35 ELIMATTA PLACE, KIAMA

Plans shown are for presentation purposes and are not part of any legal document or title and are subject to errors, omissions, inaccuracies and should not be used as sole and accurate reference. Particulars given are for general information only and do not constitute any representation on the part of the vendor or agent. No liability will be accepted. AR2.NET.AU

AR2



Garage	32m <sup>2</sup>
Internal	107m <sup>2</sup>
Patio/Verandah	37m <sup>2</sup>
<b>TOTAL SPACE</b>	<b>176m<sup>2</sup></b>

RayWhite.