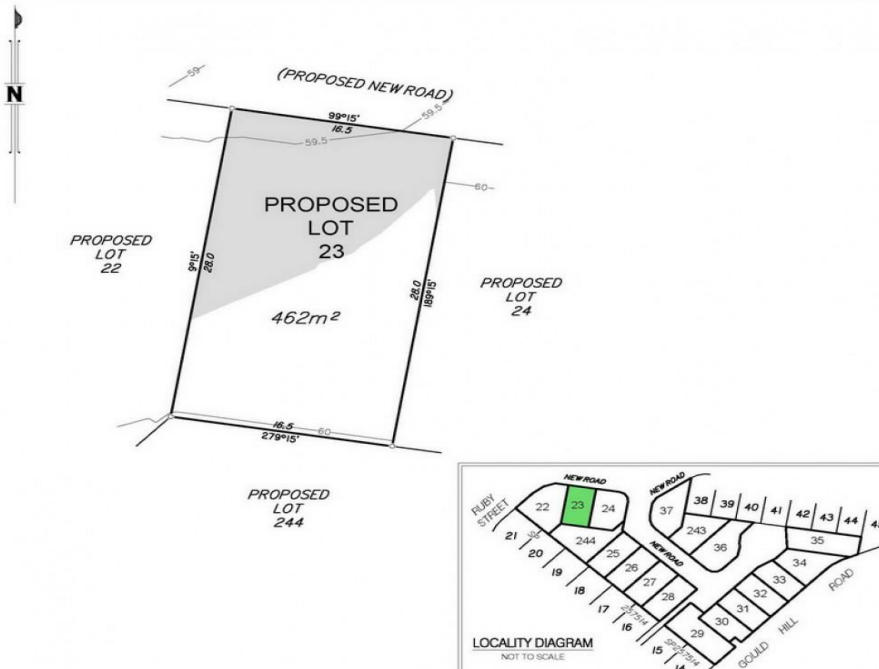


## Lot 23/0 Ruby St, Gleneagle, QLD 4285

\$178,000

Residential Land



## Lot 23 Ruby Street, Gleneagle

Scenic Rise Estate is situated only a couple of minutes drive North from the center of Beaudesert.

Buyers looking to invest and take advantage of the future infrastructure in nearby Bromelton would be buying in a great location at this estate.

If you are a first home buyer looking to build, this estate is perfect for you, consisting of generous sized blocks for a realistic price!

with Stage 3 offering a great new lots positioned in quite Cul De Sac roads that will ensure a nice private setting for your new home.

Local Amenities and Travel Distance include but are not limited too:

- 55 minutes to Brisbane
- 1 hour to Gold Coast
- 7 minutes to Beaudesert Hospital
- 10 minutes to Bromelton
- 8 minutes to Beaudesert State School
- 6 minutes to Beaudesert High School
- 7 minutes to local shopping precinct including Woolworths, Coles, Chemists, Post Shop and multiple Fast Food Outlets

Display builders are welcome to package on some selected lots, call agent now to request current stock list.

If you would like to discuss this opportunity further, please contact Mark Todd on 0447 880 900 or 1300 360 388 and select option 2.

**Open for Inspection**

By Appointment.

### Listed By

Mark Todd

