

510/1525 Dandenong Rd, Oakleigh, VIC 3166

Sold - 13/04/2022

Apartment 2  2  1 



Inspection today. Must sell

Perfect for owner-occupiers or investors seeking high returns of approximately \$21,000.00 per annum , Drummond Rise is a quality built apartment complex strategically located within easy walking distances to Oakleigh Central, train and bus terminals with convenient transfers to Monash Universities, Chadstone Shopping Centre, Monash Medical Centre and access to the Monash Freeway.

Open for Inspection

By Appointment.

On offer is a corner located apartment on the fifth floor, featuring 2 brightly lit East facing bedrooms (en-suited master), Euro laundry, open plan kitchen, meal and living area leading out to a private balcony with sweeping view. Quality fixtures and fittings throughout: Euro oven/cooktop/rangehood, soft close cabinets, stone bench top, glass splashback, heating/cooling unit, video intercom, Foxtel/TV/ADSL/Optic Fibre internet and secure underground car parking and storage with two lifts to every floor

For private inspection Contact: James Tan 0450-351-706 jamestan@melbourneC21.com.au

Listed By

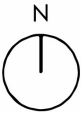
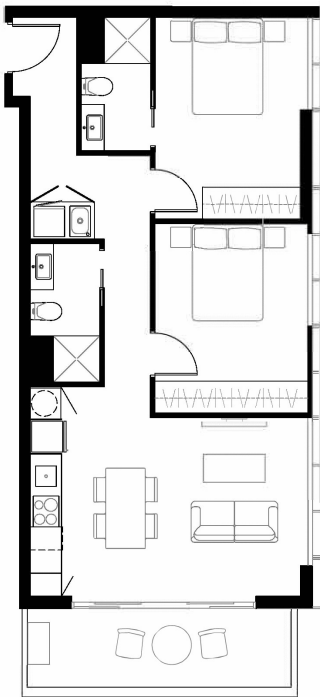
The Office

Phone: (03) 9544 8888



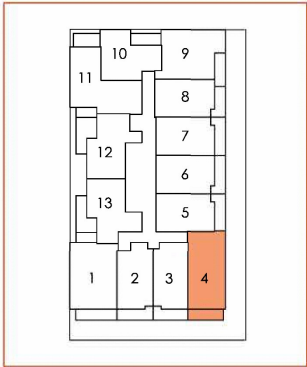
Floorplan

Drummond Rise



Apartment
510

2 Bed 2 Bath 1 Car



Internal Area	65.62m ²
Balcony Area	8.64m ²
Total Area	74.26m ²

Developer	A-CCJ Pty Ltd
Project Manager	Ardcon
Design Architect	Urban Design Architects

Every care has been taken to verify the precision of details in this brochure. Prospective purchasers are requested to take such action as is necessary to satisfy themselves of any pertinent matters. All diagrams or visual representations are for illustration only and are not necessarily to scale or colour. Individual apartments may vary in size. Please refer to full scale overall plans for confirmation. Please refer to plan of subdivision for official lot numbers. Loose furniture and white goods are not included unless scheduled.