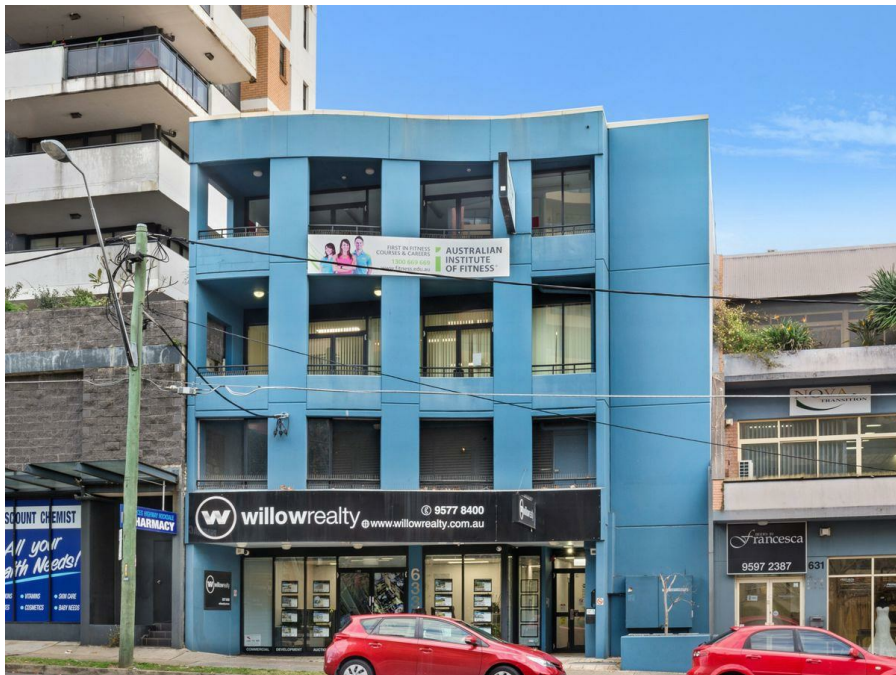


3/663 Princes Hwy, Rockdale, NSW 2216

\$7,100.00 Plus GST per month

Office Suite



Large Top Floor Office With Maximum Exposure

Located with excellent EXPOSURE on the busy Princes Highway, is this 461 sqm top floor office with secure parking!

The position of this office is nothing but PERFECT, opposite Rockdale Plaza, a 5 minute walk to Rockdale train station, and easy reach to Sydney Airport, rapid access to the motorways and within minutes of the sparkling bayside beaches.

This property will suite a variety of uses (STCA).

Featuring:

- * Currently fitted as fitness training centre
- * Ducted air-conditioning and a split system
- * Partitioned rooms & data cabled
- * Allocated secure parking
- * Two large partitioned office suites
- * Reception area with two consultation rooms
- * Space for a huge boardroom
- * Signage potential to thousands of passing cars daily
- * Male & female toilets with shower amenities
- * Fully fitted kitchen with stainless steel cooking appliances
- * Four large balconies great for entertaining
- * Direct lift access and a staircase
- * Close to transport being bus & rail
- * Directly opposite Rockdale Plaza
- * Security video intercom
- * Security alarm system
- * Rent \$7,100.00 Plus GST per month / negotiable
- * Outgoings applicable

Listed By

Francois Vassiliades

Open for Inspection

By Appointment.

