
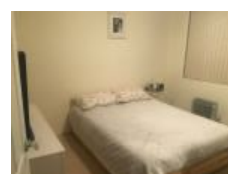


6/16 Grace Campbell Cres, Hillsdale, NSW 2036

Leased - \$600

Apartment 2  1  1 



****Deposit Taken** Beautiful Park Side Apartment w. LUG**

Overlooking Grace Campbell Reserve, this apartment offers exceptional value and flexibility.

Featuring 2 good size bedrooms with new carpet, 1 bathroom with bathtub, an internal laundry, large kitchen with stone benchtop and gas cooking, separate living and dining areas, parquetry/tiled floors, bright balcony, new blinds, new carpet, an oversize lock up garage and carapace.

Open for Inspection

By Appointment.

The area provides easy access to Westfield Eastgardens, Hensley Oval, Heffron Park, UNSW, POW Hospital, Sydney's CBD, Sydney's Eastern Beaches and plenty of public transport options.

- 2 Bedrooms + New Carpet
- 1 Bathroom + Bathtub
- Oversize LUG + Car Space
- Internal Laundry
- New Blinds
- Excellent Condition
- Many Amenities Near By

Available NOW

View As Advertised or By Appointment

Applicants considered only after they have inspected the property.

Listed By

The Office

Phone: (02) 9311 7266

