

**22 Mandalay Cct, Beveridge, VIC 3753****Sold - 26/08/2019**House 5  3  3 

## Stunning Home Suited to Large Family

I know you have been searching for a long time to find the right home for you and your family. I also know you have a specific list of criteria that you need to meet before you would consider buying a property, you are not a usual buyer, you appreciate quality and appreciate the finer details in a home. I am here to tell you that I have what you have been searching for! Let's begin with the basics, this east facing double storey home has amazing street presence and is located in a prominent position that nobody will miss as they drive into the Mandalay

Resort Estate. Close enough to walk to the Mandalay Club House and located adjacent to the 1st hole, the expansive floor plan allows room for all the family and guests with 4 living areas, 3 bathrooms and a study spread across two levels of residence is sure to impress even the most fastidious buyer. From the light filled entry foyer designed to take advantage of the morning sun and 2.7m ceilings on the lower level to really emphasise the spacious open feeling of a larger home, yet with a 6 Star Energy rating you would be surprised at the homes efficiency. The oversized master bedroom with full ensuite and bath plus dressing room at the rear is placed to the front of the home, with all other bedrooms upstairs. The entry also leads through to the first living area which is private if you wanted to watch a movie in peace, and as an added bonus the home has been internally wired for speakers ready for your surround system or intercom. From here it is on to the central hub of the home. The kitchen has all the modern conveniences such as stone bench tops, 900mm oven and hotplates, walk in pantry and overlooks both the family and rumpus rooms. Upstairs continues the trend with large bedrooms, a study nook, bathroom and its own living area for the kids. Externally there is nothing to do on this 700m2 allotment (approx.) with a mixture of turf, established landscaping and concrete making your outdoor living under the alfresco (complete with block out blinds) a breeze. Speaking of a breeze, the home backs onto the Mandalay Golf Course which means no neighbours at the rear and uninterrupted views. If this is not enough to convince you, just remember you are part of an incredible Estate which gives you the use of all the amenities such as swimming pool, tennis courts, gymnasium and access to the restaurant and an award winning public golf course, in addition to the facilities, Beveridge also offers a new Primary School with an estimated completion in 2020 and a current Day Care centre all within walking distance to where your new home is located. What's not to love!!

### Open for Inspection

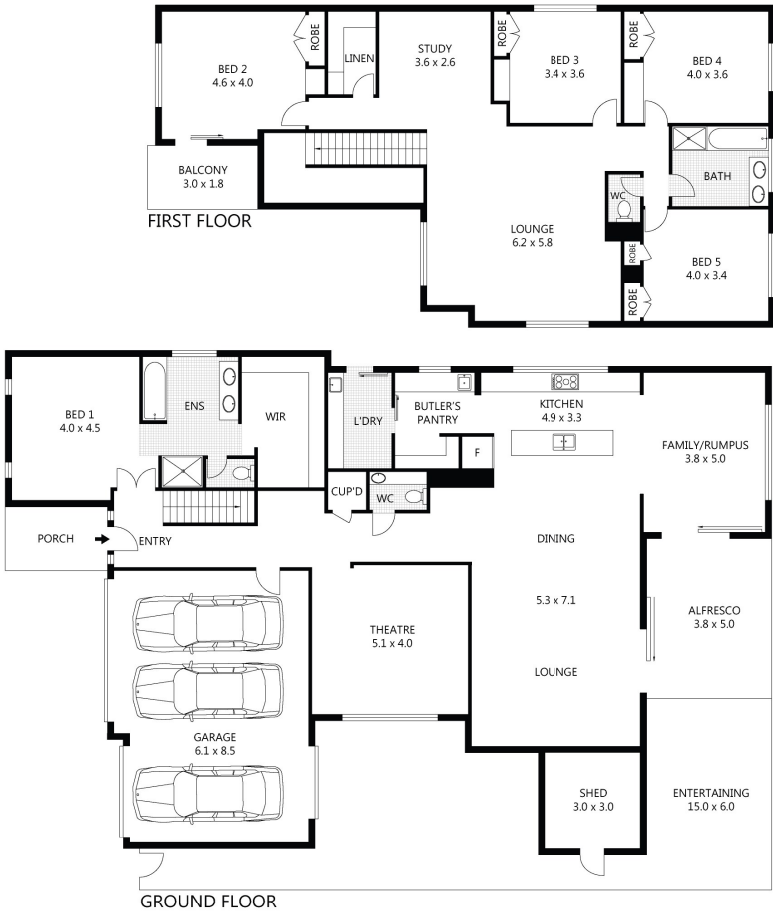
By Appointment.

**Listed By**  
Stuart Rimmer



Listing Number: 2947797

Floorplan



Scale in meters. Indicative only. Dimensions are approximate. All information contained herein is gathered from sources we believe to be reliable. However we cannot guarantee its accuracy and interested parties should rely on their own enquiries.



22 Mandalay Circuit, Beveridge

