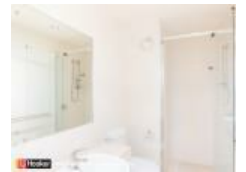
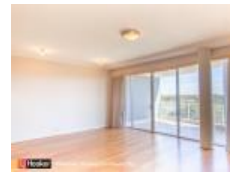


Apartment /88 Great Eastern Hwy, Rivervale, WA 6103

\$470 wk

Apartment 3  2 



STUNNING RIVER VIEWS IN SECURE COMPLEX

Don't miss out the opportunity to call this stunning apartment your new home. Featuring neutral tones throughout and offering plenty of natural lighting, this executive style apartment is carefully laid out with an open plan living, kitchen, meals and family room which overlooks the spacious balcony complete with stunning views of the river.

Open for Inspection

By Appointment.

Some of its amazing features include:

- Three bedrooms, all double sized complete with plenty of storage space
- Two bathrooms with a separate spa bath to the ensuite
- Kitchen complete with stainless steel appliances and ample storage
- Spacious balcony with stunning views of the Swan River
- Sparkling underground swimming pool
- Split system air-conditioning to the living area 2 bedrooms
- TWO allocated car bays
- Secure gated complex
- Updated touch screen intercom system with video surveillance

About the Area:

- Immediate access to major freeways
- Easy access to airports, schools and universities
- Adjacent to Crown Entertainment Complex
- Within close proximity to Burswood Stadium and public transport

*Please note the fridge is not included

For further information, please contact Leoni Clymo at LJ Hooker Willetton Shelley Cockburn City.

Listed By

Victor Paz
Phone: (08) 9457 9955
Mobile: 0413 644 202

