

16 Altai Dle, Stratton, WA 6056

Sold - 2/08/2019

House 4  2  2 



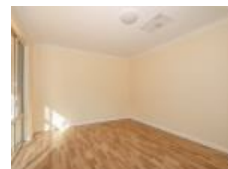
630SQM BLOCK!!

This 4 bedroom 2 bathroom home is located on a 630sqm block (approx.) in Stratton.

FEATURES:

- * Freshly painted throughout including walls, skirting boards, internal doors and doorframes
- * Brand new oven, cooktop and range hood
- * Brand new split system air-conditioning units to living area and master bedroom
- * Ducted evaporative air-conditioning
- * New vinyl flooring to Kitchen/Living area
- * Master bedroom with walk in robe and ensuite
- * 4th bedroom/study or nursery with access into the Master Bedroom
- * Main bathroom with bath/shower
- * Separate Laundry
- * Brand new instantaneous hot water system
- * Brand new paved driveway
- * Patio
- * Double garage with new door and drive through access to shed with roller doors
- * Approx. 1.9km from SUPA IGA Stratton shopping complex
- * Approx. 6km from Midland Gate, Midland Train Station & Midland St John of God Hospital

For more information or your own private viewing contact Richard Lowenhoff or Jessica Macarthur from LJ Hooker Midland today!



Open for Inspection

By Appointment.

Listed By

Richard Lowenhoff
Phone: (08) 9274 5555
Mobile: 404030493

Richard Lowenhoff
Phone: (08) 9274 5555
Mobile: 404030493

