

16 Lakelands Dr, Dapto, NSW 2530**Sold - 9/03/2019**House 4  2  2 

Perfect First Family Home

This four bedroom home has that special cottage feel with all the little extras your family needs. Featuring timber flooring, ornate cornices and a modern kitchen combined with the dining area. The level backyard off the entertainment deck is perfect for the kids and pets. Close to the Motorway, Lakelands Public School, Dapto Citizens Bowling Club and only minutes to the Dapto CBD, makes access to everything a breeze.

- Easy care home offering four good sized bedrooms
- Renovated bathrooms and kitchen, to just enjoy
- Modern kitchen combined with the dining area
- Main bedroom with ensuite opening onto rear deck
- Timber floors, ornate cornices, split air conditioning
- Single lock up garage plus carport and workspace
- Perfect investment or starter home for the young family
- Entertainment deck overlooking backyard and pool
- Walking distance to Lakelands Public School and club
- Easy freeway access and only minutes to the Dapto CBD

Open for Inspection

By Appointment.

Listed By

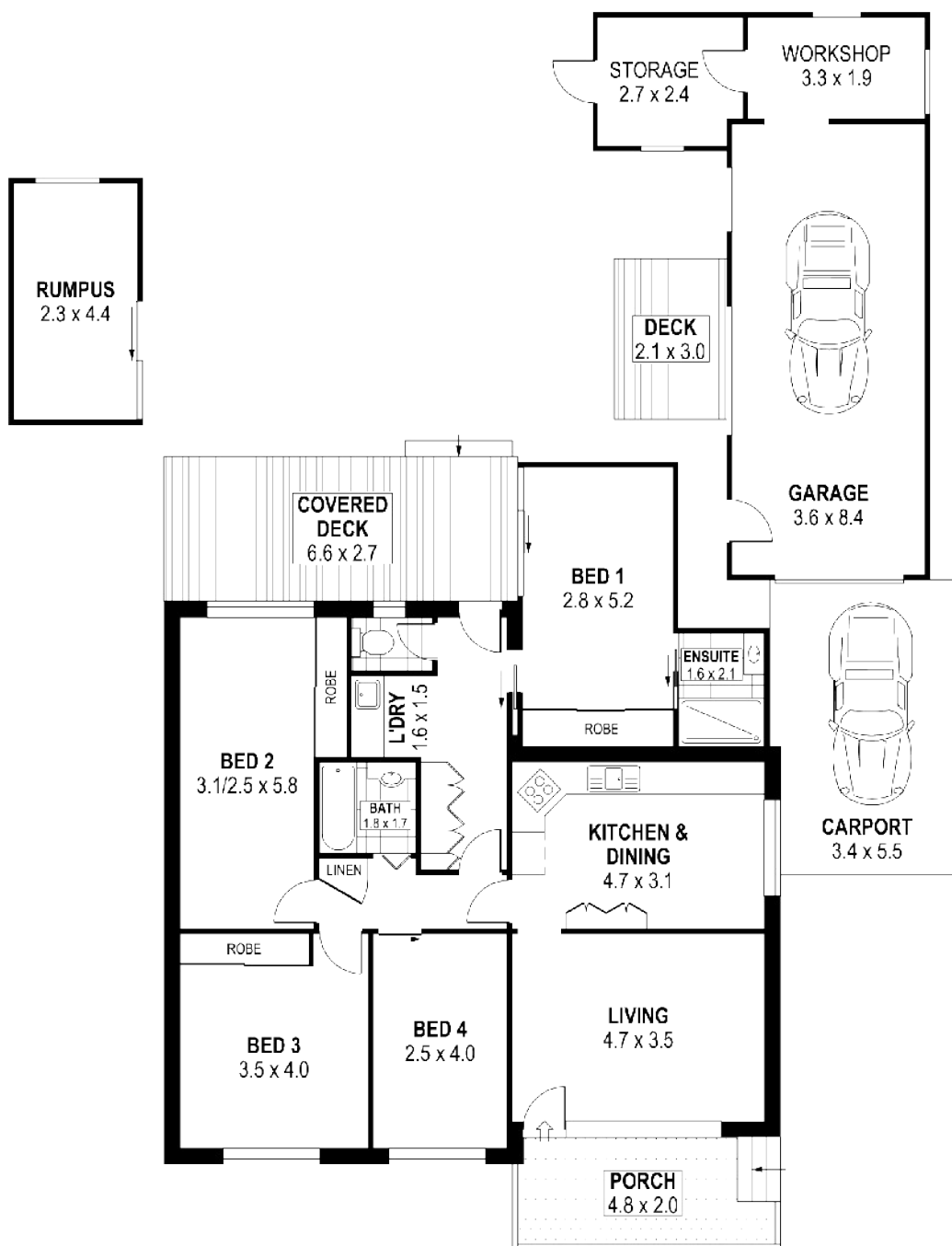
Sarah Ward

Phone: (02) 42857400

Mobile: 0400439602



Floorplan

**DAPTO****16 LAKELANDS DRIVE**INTERNAL FLOOR AREA APPROX: 113m²TOTAL FLOOR AREA APPROX: 218m²

Disclaimer: Design Junkies Graphic Imagery whilst preparing this document for the use by The Real Estate Products Group Pty Ltd clients used our best endeavours to ensure that the information contained in this document is true and accurate, but accept no responsibility and disclaim all liability in respect of any errors, omissions, inaccuracies or mis-statements contained in this document. Prospective purchasers should make their own enquiries to verify the information contained in this document.

ONE AGENCY
JD PROPERTY AGENTS