



17/10-16 Castlereagh St, Liverpool, NSW 2170

Sold - \$433,000

Unit 2  2 



## MOTIVATED VENDOR

Having undergone modern updates the apartment presents as the best value unit in town. Located close to Westfields the apartment is situated on Level 2 and offers 2 bedrooms (each with b/i robes), 2 bathrooms, spacious open plan living area, modern gas kitchen and balcony. Total area 102sqm includes one secure car space and storage. Currently returning \$380.00 per week lease expiry date 26/04/21.

\* Strata \$861.23 per quarter, \* Water \$147.23 per quarter \* Council \$287.58

### Open for Inspection

By Appointment.

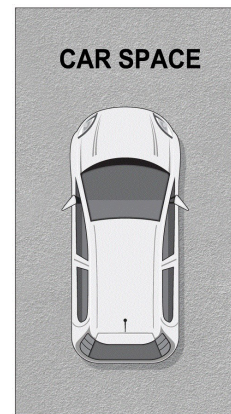
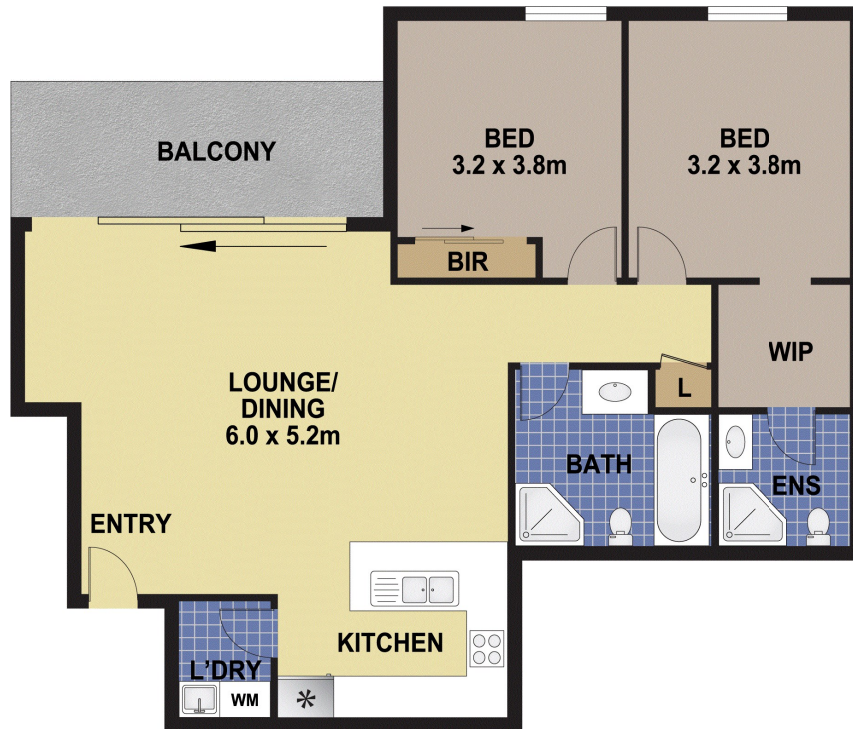
### Listed By

The Office  
Phone: (02) 9601 5944

The Office  
Phone: (02) 9601 5944



Floorplan



17/10-16 CASTLEREAGH STREET, LIVERPOOL

DISCLAIMER

PLANS SHOWN ARE FOR MARKETING PURPOSES ONLY. ALL DIMENSIONS ARE APPROXIMATE AND NOT TO SCALE. THEY ARE SUBJECT TO ERRORS AND INACCURACIES AND NO LIABILITY WILL BE ACCEPTED. INTERESTED PARTIES SHOULD MAKE THEIR OWN ENQUIRIES.

CENTURY 21.