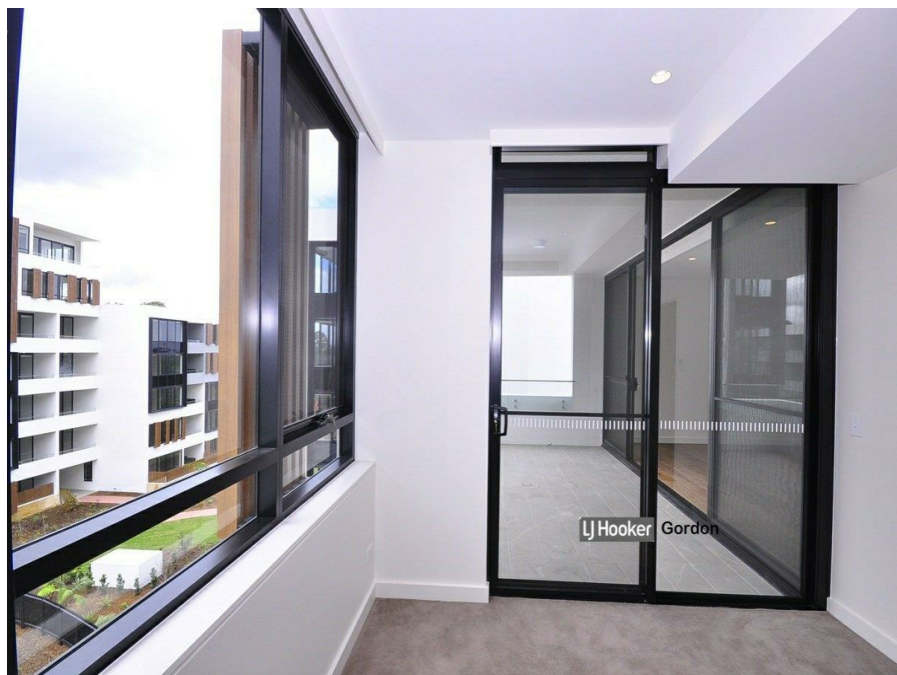


W1001/1 Avon Rd, Pymble, NSW 2073

Leased - \$500

Apartment 1  1  1 



One Bed plus Study - High Level

This premium quality one-bedroom apartment with a study or storage room presents an exclusive opportunity to acquire a luxurious life style on the North Shore Sydney. It is close to PLC, train, shops, and restaurants.

The building behind the Club House provides the access to this apartment.

- One full size bedroom plus a study room or storage room
- Rich and natural surrounds blending indoor/outdoor living
- Spacious airy living room complemented by a stylish bathroom
- Caesarstone Benchtops, Miele appliances, timber floorboards and plush wool carpets
- Air Conditioning through out
- Basement car parking
- Walk to Pymble Village and train station
- Close to shopping centres include St Ives, Gordon Village and Macquarie Centre
- A short drive and a few stops away by train to Chatswood and Hornsby shops
- Easy access to Pymble Ladies College

Open for Inspection

By Appointment.

DISCLAIMER: All information contained herein is gathered from sources that we believe reliable. We have no reason to doubt its accuracy, however we cannot guarantee it. This information is not to be used in formalising any decision nor used by nor used by a third party without the expressed written permission of LJ Hooker Gordon.

Listed By
Kenny Gong



Listing Number: 2837328

Every precaution has been taken to establish accuracy of the information above, but does not constitute any representation by the vendor or real estate agent.