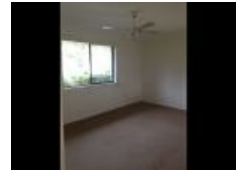


14 Sapium Rd, Ashmore, QLD 4214

\$460 wk

House 3  1  1 



Family Home With Large Garden

Great central location, close to Bellevue Park Primary School and Benowa Schools, Bronberg Plaza and Benowa Gardens Shopping Centres, transport and medical precinct.

Ideal three bedroom family home which was recently repainted, carpeted, and a new kitchen, ceiling fans, one bathroom with separate toilet. The single lock up garage has internal access.

Paved outdoor entertaining area with shade sail cover, huge back garden area - ideal for children's play and a garden shed for extra storage.

Out door pet considered on application.

Arrange to inspect today.

Available now!

Open for Inspection

By Appointment.

Listed By

Anna Tooma

Mobile: 0411 311 500

