

**29/55-61 Belmont St, Sutherland, NSW 2232**

**Sold - 22/02/2018**

Unit 2  1  2 



## Double Garage Plus Storage!

Very well presented two bedroom unit recently undergone a stylish refurbishment throughout, quietly positioned at the rear of modern complex this elevated apartment would suit the most fastidious buyer.

Unique two level design offering separation from bedrooms & living area, only one common wall natural light filters through all rooms. An extra bonus is the remote operated double garage having an area of 45 square metres offering side by side car parking as well as trailer storage.

**Open for Inspection**

By Appointment.

Enjoy the private north facing two storey layout featuring:

- \*spacious living area with wraparound balcony
- \*modern kitchen with dishwasher & semi walk in pantry
- \*separate window ventilated second toilet
- \*build in wardrobes to both bedrooms
- \*large window ventilated internal laundry
- \*wrap around balcony off bedrooms on second level
- \*only 8-10 minutes' walk to station & shops

Strata - \$865 per ¼

Water - \$171 per ¼

Council - \$264 per ¼

Call Shamus on 0409 286 652 to inspect

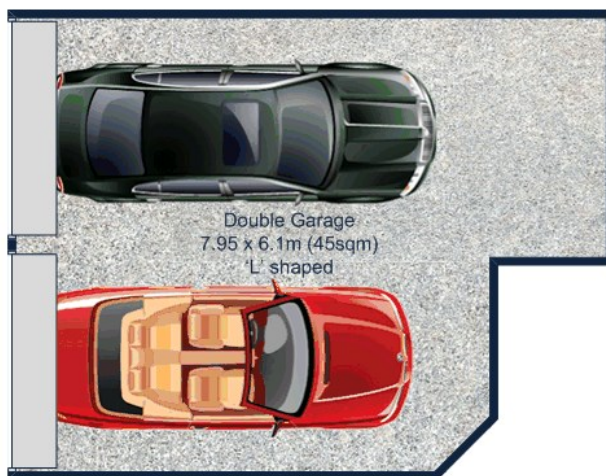
### Listed By

Shamus Watkins  
Phone: (02) 95214644  
Mobile: 0409 286 652

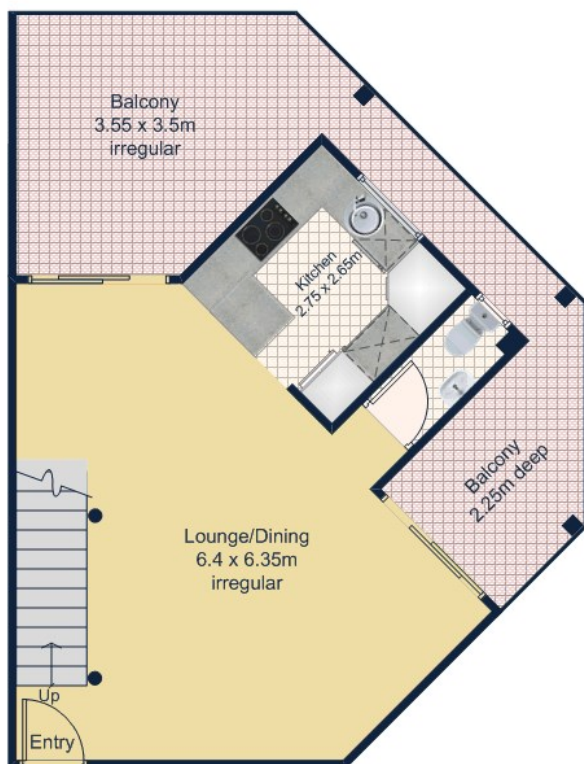


Floorplan

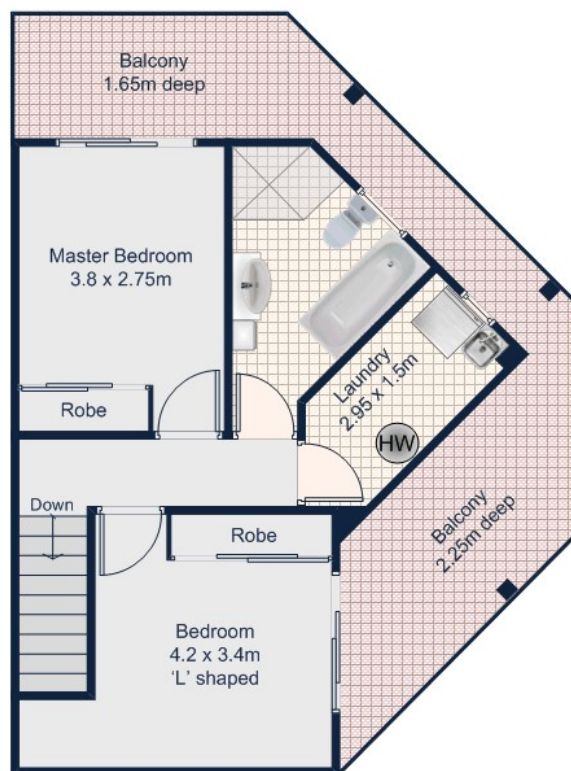
**Watkins**realestate



**Secure Basement**



**Entry Level**



**Upper Level**

**29/55-61 Belmont St, Sutherland**

This plan is for illustrative purposes only, dimensions are approximate, it does not constitute part of any legal document or commercial contract for the sale of this property.

**FLOOR  
& FOTO**  
0420 310 710

Listing Number: 2717487