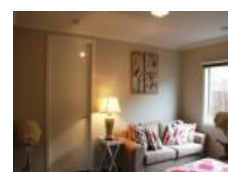


20 Haslewood St, Point Cook, VIC 3030

\$495 per week

House 4 2 2



The definition of character

****IMPORTANT! REGISTER TO INSPECT PROPERTIES****

By registering your details you will be instantly informed of any updates, changes or cancellations to the inspection time. If no one registers for an inspection time then that inspection may not proceed.

Open for Inspection

By Appointment.

LJ Hooker Point Cook presents 20 Haslewood Drive, Point Cook. This lavish family home, located in Esperance estate, not only offers adaptability, but also plenty of space and resort style living!

- Comprising four spacious bedrooms, including huge main bedroom with walk in robe and dual vanity ensuite. Secondary bedrooms all fitted with double built in robes.
- Well-equipped kitchen complete with 900mm stainless steel appliances inclusive of integrated dishwasher, stone bench tops, glass splash back, double built in pantry, drop down feature lights and all round top of the range finishing touches.
- Central open plan living comfortably spread across elegant layout on magnificent tiling with an abundance of natural light exuding into the home plus a separate rumpus room.
- Highlighting an extended outdoor living area introduced on quality decking and well-manicured gardens, this home is simply perfect for the entertainer!
- Additional features include double remote control garage, ducted heating, evaporative cooling, downlights, front and rear landscaping and lots more!

Located about 28km from Melbourne's CBD in Esperance estate, easy freeway access, multiple schools surrounding, parks throughout estate, short walk to Sanctuary Lakes Shopping Centre with a number of restaurants readily available, bus stops only minutes away with direct route to Williams Landing Train Station.

Listed By

The Office

Phone: (03) 9975 7080

