


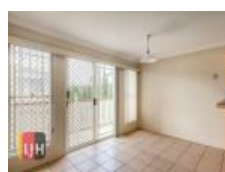


49 Florrie St, Woolloowin, QLD 4030

\$450 / Wk

Townhouse 3  2  1 



## THREE BEDROOM TOWNHOUSE - SORRY NO PETS

You will LOVE living here! Whether you are homeward bound or heading out, the Airport via the tunnel, Centro Lutwyche Shopping Centre, Royal Brisbane Hospital and an array of shops and restaurants are all just minutes away.

You will feel totally connected with a direct link to the city: a short 200m stroll to the innovative Lutwyche Bus Station OR by rail from nearby Woolloowin & Albion Train Stations, redefining easy commuting.

This townhouse features new carpet, spacious separate living and dining areas, large kitchen with new oven/cooktop/dishwasher, three bedrooms with ceiling fans, built in robes & ensuite bathroom, walk in robe and private balcony with city views to the main bedroom. There's also a private courtyard, internal laundry with powder room, fully screened, good security & remote controlled lock up garage. \*Air con coming to living & main bedroom

### IMPORTANT INFORMATION ABOUT INSPECTING PROPERTIES !

If the property is available NOW, please call the office to find out how you can have an inspection.

If the property is available IN THE FUTURE, please check for an inspection time.

If there is an inspection time, there is no need to register or confirm, we WILL be there at the time advertised.

If there is no inspection time, please send an enquiry through and we WILL reply with the inspection time once it has been arranged.

\*Please note we do not accept Form1 applications\*

We appreciate your patience, we thank you for your assistance and we hope we are able to help you secure your new home!

### Open for Inspection

By Appointment.

### Listed By

Richard Mirosh  
Phone: (07) 3356 7888  
Mobile: 0414 512 776

