




Apartment /4 Kinsey St, Moama, NSW 2731

Leased - \$495

Townhouse 3  2  2 



City Feel with Country Appeal

Located in the ever evolving central Moama precinct is this cutting edge design townhouse/apartment. This double storey home features three bedrooms, two bathrooms, double garage, private balcony area with BBQ and fridge, superior fixtures and fittings and fully landscaped surrounds . Within walking distance to the marketplace, restaurants, cafes, clubs and sporting facilities, the convenience of being right in the middle of town is perfect. Inspection will impress!

Open for Inspection

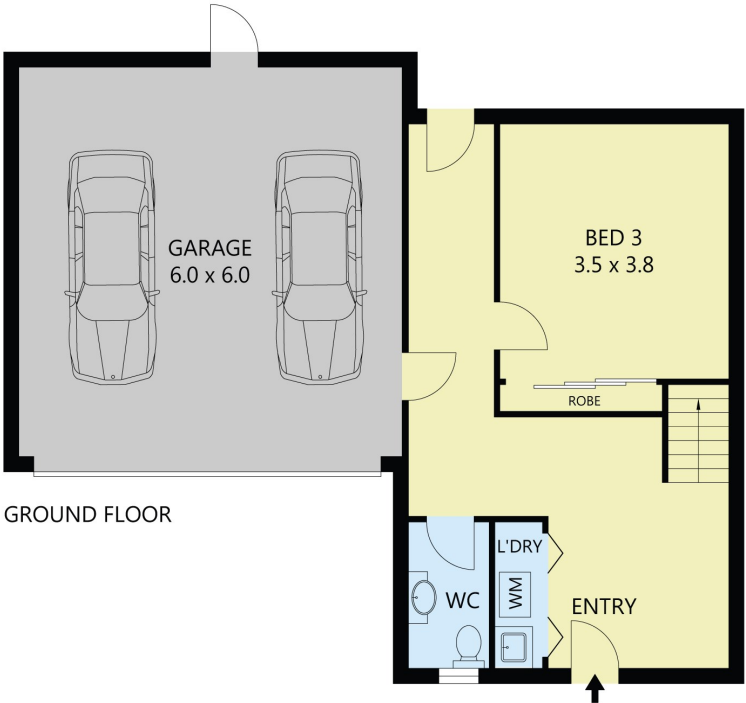
By Appointment.

Listed By

Allison Minter
Phone: (03) 5480 6922
Mobile: 0419 593 801



Floorplan



Scale in metres. Indicative only. Dimensions are approximate. All information contained herein is gathered from sources we believe to be reliable. However we cannot guarantee its accuracy and interested parties should rely on their own enquiries.

Garage	-	37m ²
Balcony	-	12m ²
Residence	-	149m ²



2/4 Kinsey Street, Moama