

3202/3440 Surfers Paradise Boulevard , Surfers Paradise, QLD
4217

Sold - 29/10/2020

House 1 1 1 1



ULTIMATE GOLD COAST RESORT EXPERIENCE

NOTE THE PROPERTY IS AVAILABLE TO INSPECT VIA PRIVATE APPOINTMENT AT YOUR CONVENIENCE.

If there is no time slot available in the booking section, please ensure you contact the agent direct and they can organise a day and time that is convenient for you.

(Open homes postponed until further notice in accordance with recent Government guidelines. Social distancing rules will be applied at private inspections).

Open for Inspection

By Appointment.

Imagine sitting on your own balcony on the 32nd floor of the new Rhapsody Resort watching GC600 race. With panoramic views over the ocean and river you will never tire of the magnificent sunrises and sunsets from your beautiful unit.

The luxurious north facing one bedroom apartment comes fully furnished. It offers two split air conditioners, two TVs, Bosch appliances including a gas cook top.

Features:

North facing with ocean and river views

Fully furnished including 2 TVs and 2 split air conditioners

Bosch appliances with gas cook top

World class resort facilities -- pool, spa, sauna, steam room, roof terrace, conference room,

Executive lounges and BBQ

Magnificent for holiday let or permanent rentals

100 meters from Bus stop and G-link tram

Premium location for GC600 car race

The Rhapsody Resort is just a minute's walk from the prestige white sands of Surfers Paradise beach and it offers the unparalleled facilities such as swimming pools, spa, sauna, steam room, resident lounge, roof terrace, conference room, gym with ocean views and BBQs. With the bus stop and tram just 100 meters away you will be able to enjoy all the Gold Coast has to offer.

If you are looking for location and convenience within a world class apartment tower then look no further. Call Ellen on 0422 212 896 now before you miss out!

Listed By

The Office

Phone: (07) 5593 0044

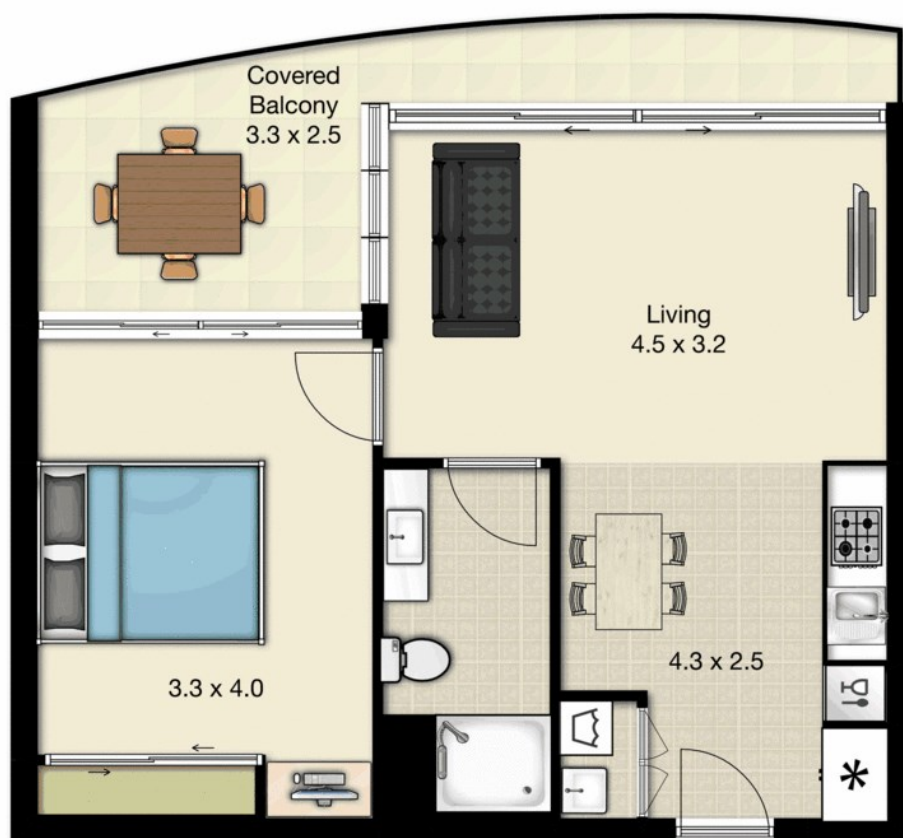


Floorplan

Apt 3202-3440 Surfers Paradise Blvd

Bedroom 1 | Bathroom 1 | Garage 1 car | Living 1

Interior Floor Area 50m²



Whilst every attempt has been made to ensure the accuracy of the floor plan. Measurements of doors, windows rooms and any other items are approximate and no responsibility is taken for any error, omission or misstatement. This plan is for illustrative purposes only and should be used as such by any prospective purchaser.