

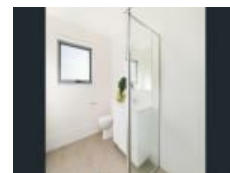
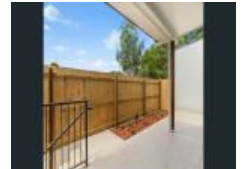
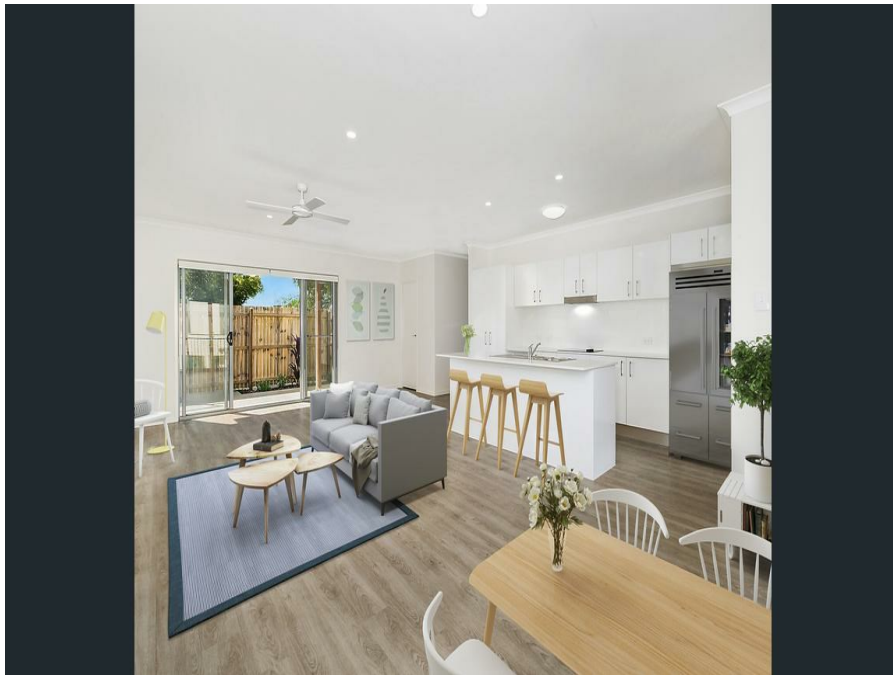



6/10 Mill Lane, Nambour, QLD 4560**Leased - \$500**Townhouse   

Stylish Modern Living In Nambour...

A link for 2APPLY Will be sent to you via sms or email.

Open for Inspection

By Appointment.

Stylish apartment living in a stunning complex of only six, within a flat walk to the Coles and Aldi Complex and the Town Centre, bus and rail. Park the car in the garage and walk to everything you need.

All on one level, this apartment is complete with two bedrooms, two bathrooms, three toilets, galley kitchen with loads of space and stone tops, front balcony, generous sized north facing alfresco terrace at rear, separate laundry, single lock up garage under . plus storage. This apartment also has split system air-conditioning to the main living area and main bedroom.

Light-filled and spacious, features include: 2-way main bathroom, stainless steel appliances, ceiling fans, quality blinds, timber-look flooring in living area, carpets in bedrooms, intercom, high ceilings, downlights and on-site visitor parking.

Greet the day over a freshly brewed coffee on your sunny terrace, before you head off to work, shopping or the beach! If you commute to Brisbane, you are just 60 metres to the train station.it couldn't be easier.

Located within 100 metres of Coles, and a short walk to all town's amenities including cinemas, cafes, banks, general retail, pubs, and more are a short stroll.

BULLET POINTS:

- * 2 Spacious Bedrooms
- * Main with Ensuite
- * 2 bathrooms, with a third toilet
- * Air conditioned to the Main Bedroom and Main Living
- * Open plan living & dining
- * Galley kitchen, s/steel appliances
- * Stone tops
- * North facing alfresco patio
- * Front balcony off lounge

Listed By

The Office

Phone: (07) 5445 8505

