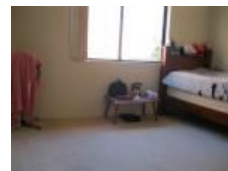


15/10-12 Tindall Ave, Liverpool, NSW 2170

Sold - \$455,000

Unit 2  1  1 



VERY LARGE UNIT

- * Huge two bedroom, top floor unit
- * Total area 107sqm
- * Built-in robes to both bedrooms
- * Large, modern kitchen
- * Massive open plan living room
- * Sunny balcony
- * Internal laundry
- * Lock-up garage
- * Located in the heart of Liverpool CBD
- * Close proximity to all amenities

Open for Inspection

By Appointment.

Listed By

Essam Eskaros

Phone: (02) 9732 4444

Mobile: 0418 111 858

