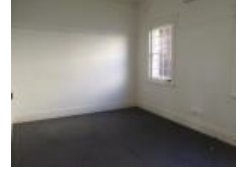


39 Douglas St, Noble Park, VIC 3174

Office Suite

\$42,000 per annum, plus GST plus
Outgoings



GREAT LOCATION SHOP/OFFICE

Located in the heart on the busy main street of Noble Park shopping centre and opposite Noble Park Train Station.

Approx. 220Sqm, big frontage and ample of public car parks at the back. Suitable for office space.

Open for Inspection

By Appointment.

Listed By

The Office

Phone: (03) 9544 8888

