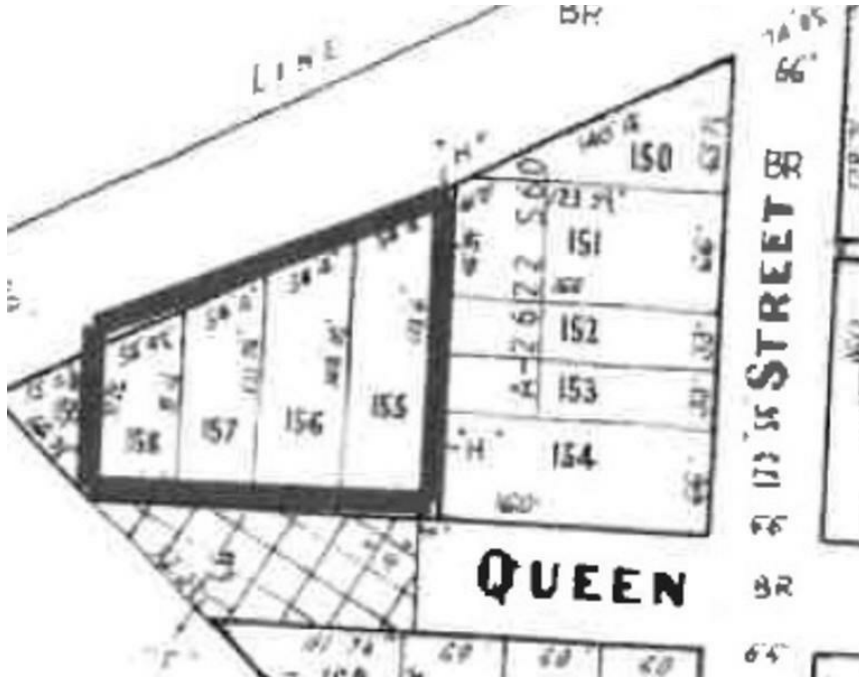


101-103 Punt Rd, Cobram, VIC 3644

Sold - 24/01/2022

Residential Land



ENTRANCE TO COBRAM POTENTIAL DEVELOPMENT SITE

Zoned Commercial 1

Measuring approx.. 2192.76m2

Presently 3 dwellings erected on site

Fantastic location with Murray Valley Highway & Punt Road,
frontage . Superb visibility for any high profile business

All development would be (STCA)

Open for Inspection

By Appointment.

Listed By

Andrew Kerr

Phone: (03) 5872 1255

Mobile: 0428 577 067

Andrew Kerr

Phone: (03) 5872 1255

Mobile: 0428 577 067

