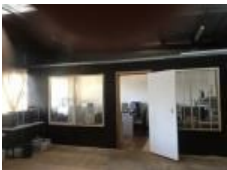


Fairfield, NSW 2165, address available on request

Contact Agent

Commercial Shop



B6 ZONING - MAIN ROAD EXPOSURE LOCATED ON THE HORSLEY DRIVE

- . Directly opposite the Fairfield CBD
- . Onsite parking for 4 cars
- . Total area 272 sqm approx.
- . Total building area 202 sqm approx.
- . Exposure warehouse with dual access
- . Multiple amenities and kitchenette
- . Suit many users including business, office, warehouse, showroom, etc.

Open for Inspection

By Appointment.

Contact the exclusive agent to arrange an inspection.  
Vincent Wang Mob: 0412 827 824 / 0402 966 888.

Listed By  
Vincent Wang

