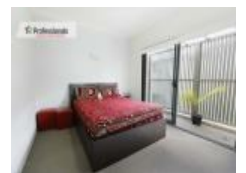


15/25-27 Mamre Rd, St Marys, NSW 2760

Sold - \$445,000

Unit 2  2  1 



Near New Apartment (2013 built)

This immaculately presented apartment ticks all the boxes. Located within the ever promising and growing future of St Marys, walking distance to St Mary's train station, Queen Street (Main strip) which has great eateries and is a shopper's delight. Access to M4 for Penrith and Sydney is just minutes up the road and access to the Great Western Highway is just around the corner.

Open for Inspection

By Appointment.

The practical and modern floor plan encompasses:

- * Open plan lounge & dining areas
- * Modern gas kitchen with stainless steel appliances
- * All weather balcony
- * 2 bedrooms with built-in robes
- * Ensuite and private balcony to main bedroom
- * Internal laundry
- * Main bathroom has a modern sleek design
- * Intercom system to access the secure unit complex
- * Secure parking accessed with an access card/pass
- * Unit has an allocated lock up storage which is located in the secure car park

Perfect for all buyers in the market and with a motivated vendor this property won't be here long..

Call Simika to arrange your inspection on 0420 848 184.

Listed By

Simika Naidoo

Brad Hansen
Phone: (02) 9677 1277
Mobile: 0430 970 132

