

**30/22-28 Penkivil St, Bondi, NSW 2026****\$760**Apartment 2  1 

## Space, Sunlight And A Prized Bondi Address

Century 21 Armstrong-Smith – Bondi Junction are proud to offer the largest apartment on the northern side of the sought-after Penkivil Gardens, this sun-drenched apartment is superbly located midway between Bondi Beach and Bondi Junction at the quiet end of the street. Impeccably maintained, the fifth floor apartment's exceptional layout features separate living and accommodation wings, both with a balcony, and level lift access to secure parking. A sunny open outlook, fresh sea breezes and ocean glimpses add to the appeal of this superb lifestyle purchase in a top location moments to Bondi Road cafés.

**Open for Inspection**

By Appointment.

Features Include:

- \* Spacious interiors bathed in all day northerly sunlight
- \* Wide entry hall with storage, glass-fronted living/dining
- \* Bright galley kitchen with an adjoining laundry room
- \* Double bedrooms with built-ins and wall to wall windows
- \* Oversized main bedroom with a balcony and dressing area
- \* Freshly schemed bathroom with a bath, intercom security
- \* Secure undercover parking plus storage and visitor parking
- \* Walk to Bondi's buzzing surf and café culture and Westfield

AVAILABLE: NOW

For further information please contact:

SHONA ARMSTRONG-SMITH

NSW PROPERTY MANAGER OF THE YEAR

(02) 9387 4911 [c21armstrong-smith.com.au](http://c21armstrong-smith.com.au)

### Listed By

The Office

Phone: (02) 9387 4911

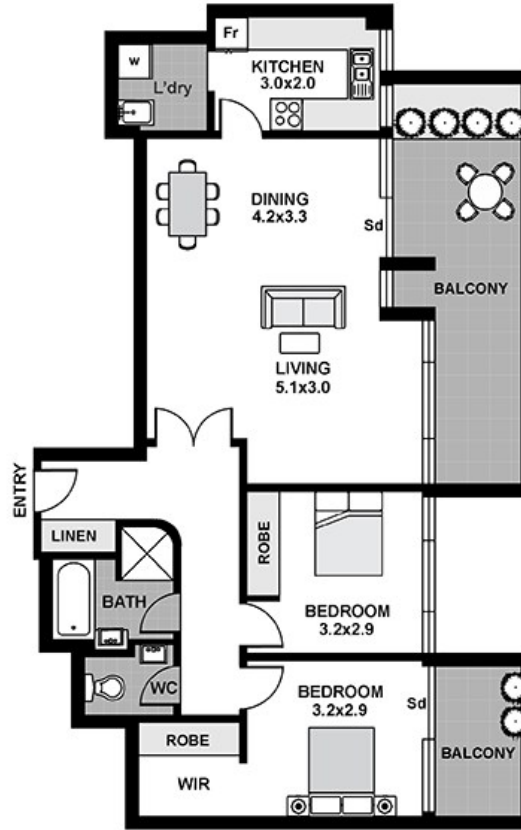
The Office

Phone: (02) 9387 4911

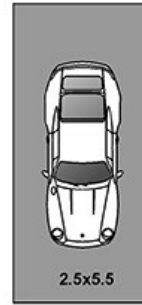


Floorplan

# 30/22-28 PENKIVIL ST BONDI



FLOOR PLAN



SECURITY UNDERCOVER  
CARSPACE



STORAGE CAGE

Fr	Refrigerator
L'dry	Laundry
Sd	Sliding door
w	Washing machine

This diagram is for illustrative purpose only. All reasonable care has been taken in the preparation, but no warranty is given to the accuracy of the information. This document does not constitute any part of any offer or contract. Dimensions shown are approximate only. Prospective purchasers must rely on their own enquiries.