

**11 Whitehead Cl, Kariong, NSW 2250**

**Sold - 22/04/2017**

House 4  1  1 



**UNDER CONTRACT**

Spacious family home in need of some TLC, well located, handy to transport, local schools and parks.

- 4 Spacious Bedrooms
- Built-ins
- Great size lounge
- Timber floors
- Brand New reverse cycle air-conditioning
- Great bright & airy family room
- Eat-in Kitchen
- Lock-up garage with auto door + possible side access for boat or trailer
- Level Fenced yard
- Generous block size of approx 564 SQM
- Close proximity to M1 – Motorway, Schools, Parks, shops
- Approx 700 Metres to shops
- Approx 300 Metres to Kariong Public School
- Currently tenanted, with the tenants keen to stay on

**Open for Inspection**

By Appointment.

**Property Features**

- reverse cycle air-conditioning
- Approx 300 Metres to Kariong Public School
- Family room + Lounge Room
- Fenced Yard
- Approx 700 Metres to shops
- Lock-up Garage

All information contained herein is gathered from sources we believe to be reliable. However we cannot guarantee its accuracy and interested persons should rely on their own enquiries

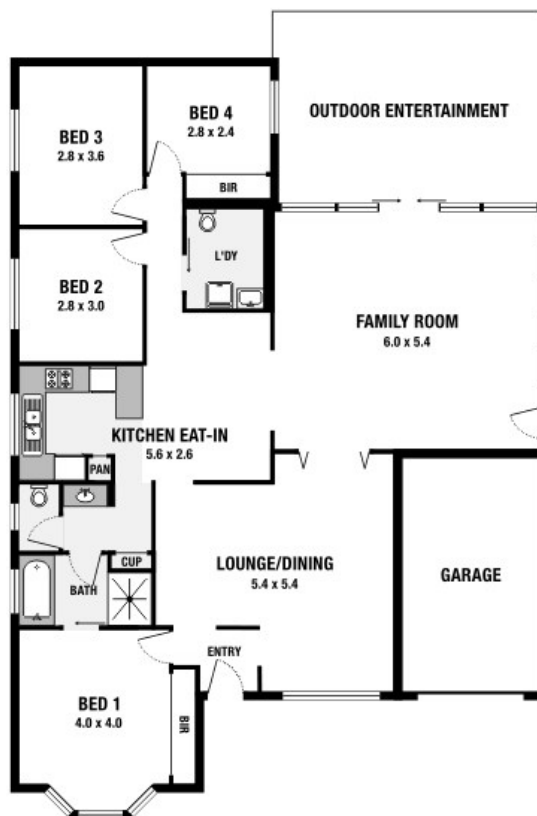
**Listed By**

Sales Department  
Phone: (02) 9987 0055



Floorplan

11 Whitehead Close, Kariong



Please note: All stated dimensions are approximate only. Particulars given are for general information only and do not constitute any representation on the part of the vendor or agent.

