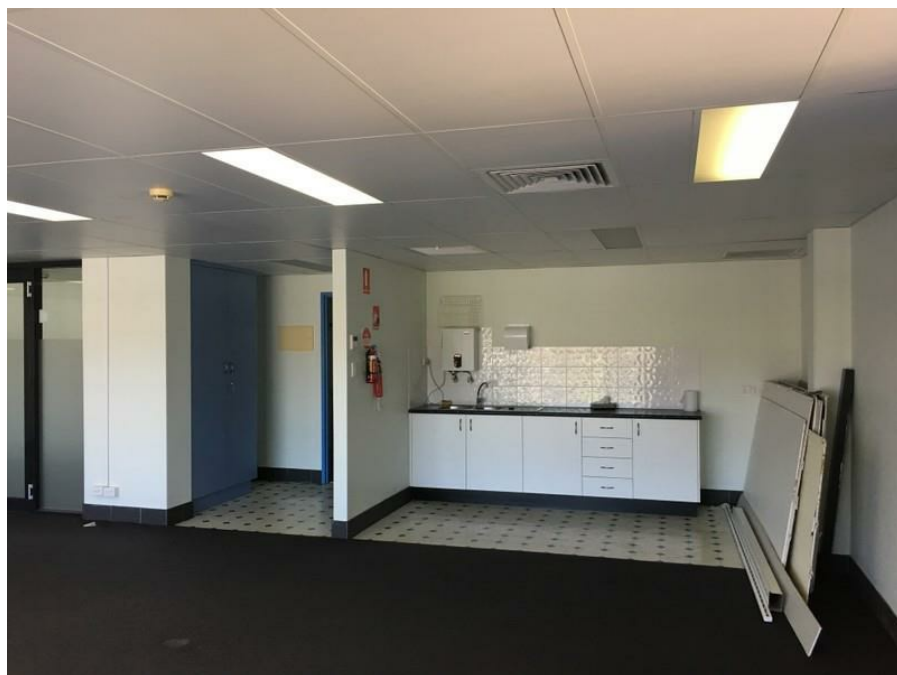


Suite 3a/225-227 Victoria St, Taree, NSW 2430

\$18,000 + GST Plus Outgoings

Office Suite



Executive style office

Executive style office suite located on the first floor of the L J Hooker Centre.

Modern fit out includes full disable toilet and access, kitchenette and balcony space overlooking the Chapman Carpark. Easy access to car parking, Fotheringham and Taree CBD. Office is approximately 100 m2 plus balconies and includes two secure car spaces.

Open for Inspection

By Appointment.

Listed By

Amanda Tate

Phone: (02) 6552 1133

Mobile: 0427 539 991

