

2 Catherine St, Strathalbyn, SA 5255

Office Suite

**\$1,735 per month (incl. GST) +
Outgoings**



In the Centre of Town

Approximately 78 sqm of centrally located real estate with off road parking, reverse cycle air conditioning and a recently installed new kitchen. Would suit office space/retail/beauty salon
A rare chance to secure a property in the heart of the town.

Available now....Contact LJ Hooker - Strathalbyn to inspect

Contact Wendy Rudd on 0488 116 153 or (08) 8536 2211 for further details and to arrange an inspection.

RLA 150 945.

Open for Inspection

By Appointment.

Listed By

Mario Bonomi

Phone: (08) 8362 8008

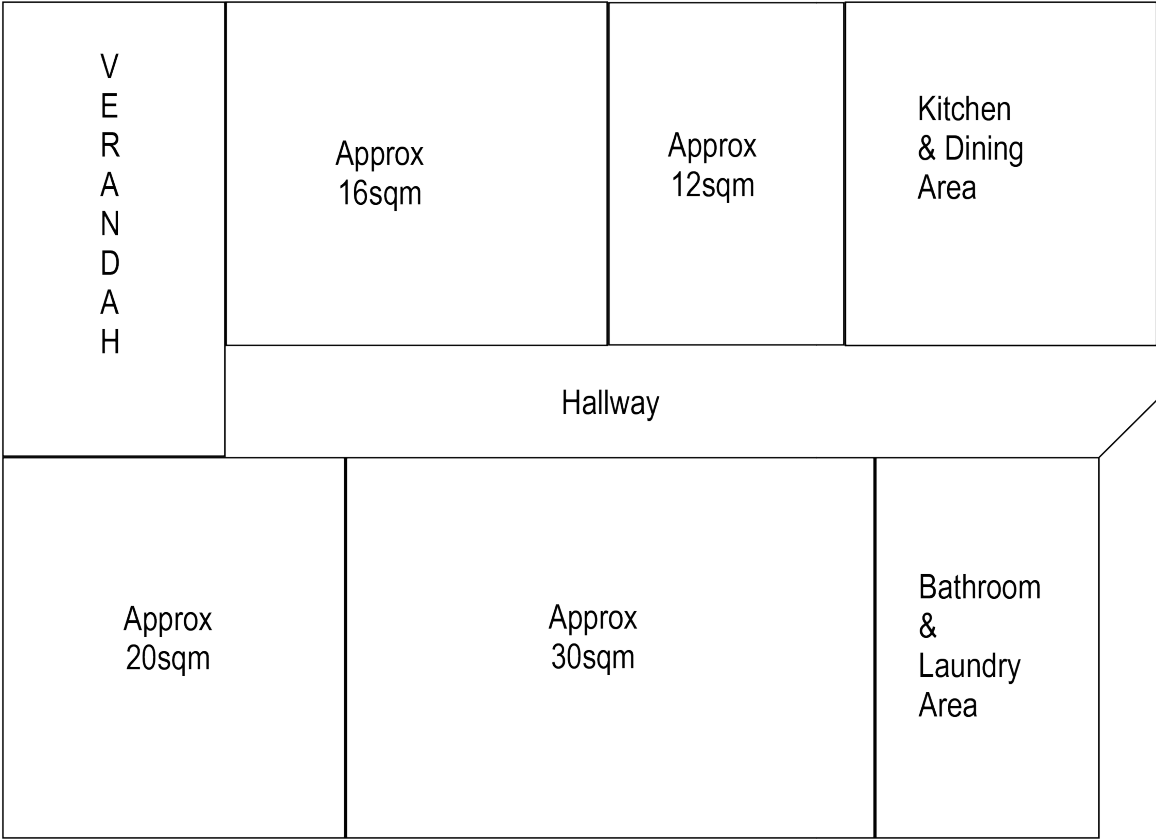


Floorplan

2 Catherine Street
Strathalbyn

PARKING

Front of
Premises



B
A
C
K
Y
A
R
D

78sqm Approx
125sqm Approx in total