
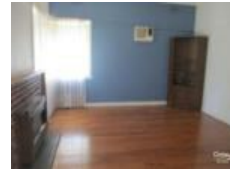



99 Corrigan Rd, Noble Park, VIC 3174**\$280 pw /1,217 pcm**House **3**  **1** **GREAT LOCATION HOME & LARGE BACK YARD.**

AVAILABLE 25TH AUGUST 2016.

This property offers 3 good size bedrooms all with built in robes in every room, gas cooking, heating & air conditioning, additional car space and a very large back yard for your family. The location is a bonus with buses and being in between Sandown and Noble Park Train station, shops, cafes, schools are also within a short walking distance.

PHOTO ID REQUIRED FOR ALL INSPECTIONS.

Open for Inspection

By Appointment.

Listed By

The Office

Phone: (03) 9547 6777

