


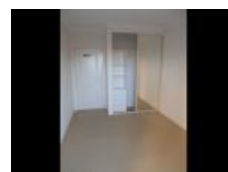


**18/8-10 Browne Pde, Warwick Farm, NSW 2170**

**\$480 Per Week**

Apartment 3  2  2 



## Deposit Taken

Modern 3 bedroom apartment in great location features large bedrooms with mirror built-ins, en-suite to main, air conditioning, security block with elevator, open kitchen with gas cooking & dishwasher, internal laundry with dryer, large courtyard & double garage. Located within walking distance to Westfields Liverpool & train station.

## Open for Inspection

By Appointment.

## Listed By

LJ Hooker Casula

