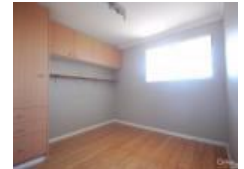


Wetherill Park, NSW 2164, address available on request

\$560

House 4 2 1



LARGE FAMILY HOME

Large family home features:

- * 4 large bedrooms, with built-ins to 2 rooms
- * Timber flooring throughout
- * Renovated kitchen with electric cooking, and dishwasher
- * Ducted air-conditioning throughout
- * Large decking leading a great sized backyard
- * Lock-up garage and carport
- * Extra kitchenette in the garage
- * External laundry with an extra toilet
- * Located only minutes from Stocklands Wetherill Park

Would you like to Inspect this property?

To Book an inspection hit the "BOOK INSPECTION" button on our website or click the "EMAIL AGENT" enter your details and we will respond instantly with inspection times.

Open for Inspection

By Appointment.

Listed By

Vladimir Hermiz

