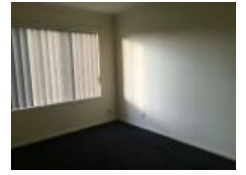


12 Greenlea Gr, Hampton Park, VIC 3976

\$375 Per Week

House 3  2  2 



Brand New Carpet ! OFI: Sat 3rd @ 1:20 - 1:30PM

This three bedroom home is in the perfect location in Hampton Park. Within walking distance to two local Schools and just a short drive to Hampton Park Shopping Centre. Located close by also is easy access to public transport. This home also contains two bathrooms, with the main bedroom featuring an ensuite and walk in robe. The remaining bedrooms at the rear of the property both have built in robes. There is a large open plan lounge, kitchen and dining area as well as a separate lounge room at the front of the home. The kitchen features loads of cupboard space, gas cooking and an island bench. Outside the home there is a large undercover patio, perfect for entertaining in the large, low maintenance fully fenced backyard. Other features include a double lock up garage, gas wall furnace, garden shed & brand new carpet throughout.

Open for Inspection

By Appointment.

Bond \$1629

Rent per calender month: \$1629

* Open times are subject to cancellation without notice - photo ID is required *

Listed By

John Deo
Phone: (03) 9702 8388
Mobile: 0411 873 123

