

10/37 Morton St, Wollstonecraft, NSW 2065

\$600

Apartment 2  1  1 



Open for Inspection Wednesday 2nd December from 4:00pm - 4:1

Secure two bedroom with lock up garage bathed in natural light, located in a quite tree lined street only a short walk to local amenities including Wollstonecraft train station and the Crows Nest shopping precinct

Open for Inspection

By Appointment.

- * Galley style kitchen, ample bench space, balcony access
- * Well proportioned living and dining areas, natural light
- * Balcony with leafy outlook adjoining the living room
- * Full sized bathroom, standalone shower and bathtub
- * Master bedroom with built in robe, rear balcony access
- * Internal laundry including dryer, additional storage
- * Lock up garage, secure walk up complex, quiet location
- * Walking distance to local shops, parks and restaurants
- * Easy access to bus and train links to Sydney CBD

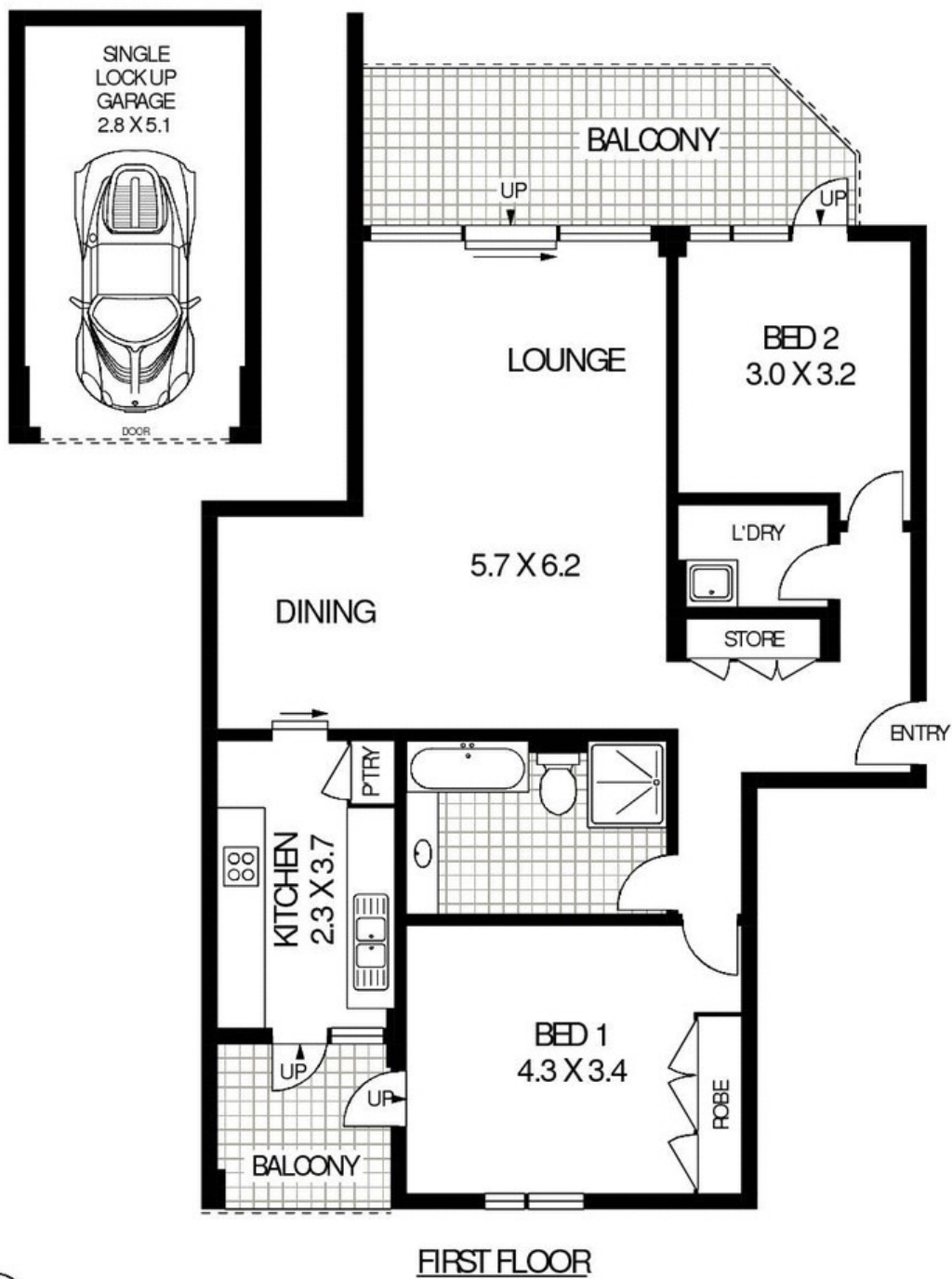
Listed By

The Office

Phone: (02) 9267 4499



Floorplan



10/37 MORTON STREET

WOLLSTONECRAFT

Floor Plan Disclaimer: Mind the Gap (mtg) floor plans / site plans are intended as an approximate guide only. No representation or warranties of any nature are given or intended and any person using this information other than as a guide should always rely on their own enquiries. Mind the Gap property marketing services / 1300 133 145 / Photography, Floor plans, Copywriting, Video, Online, Design / www.mindthegap.com.au

