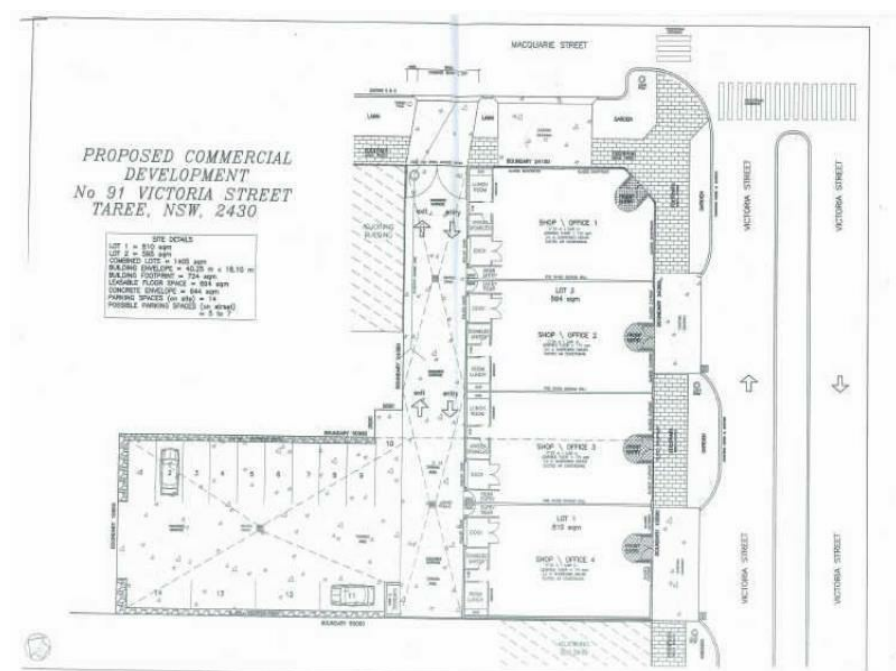


85-91 Victoria St, Taree, NSW 2430

\$187,600 pa N

Retail Shop



## NEW RETAIL/OFFICE PREMISES TO BE CONSTRUCTED

Prime corner sit on Victoria Street. Total area available is 700m2 with smaller areas available from 172m2. Modern fit out including OH & S compliance, ducted air-conditioning, lunch room and disabled toilets. Attractive lease deals for the right tenants.

**Open for Inspection**

By Appointment.

### Listed By

Amanda Tate  
Phone: (02) 6552 1133  
Mobile: 0427 539 991

