

**41 Hopman Cres, Berkeley, NSW 2506**

**Sold - \$450,000**

House 3  2  1 



## Picturesque Far Reaching Views

Occupying a generous 560sqm parcel on the high side of a peaceful street, this original brick home is liveable now and brimming with potential to update. It captures picturesque, far reaching views over the treetops and there are no neighbours at the rear.

- Low traffic street setting, mere moments to the highway
- An excellent entry point into the area for a young family
- Good sized living and dining plus separate rumpus with bar
- Aspect enhances outlook and provides good natural light
- Front balcony plus spacious sun washed lawn at the rear
- Paved alfresco area, scope to create superb barbecue space
- Move in now, then renovate interiors in stages if desired
- Full original main bathroom plus ensuite to the main bedroom
- Oversized internal access garage, rumpus, abundant storage
- Easily accessible to local schools, shops and parks

### Open for Inspection

By Appointment.

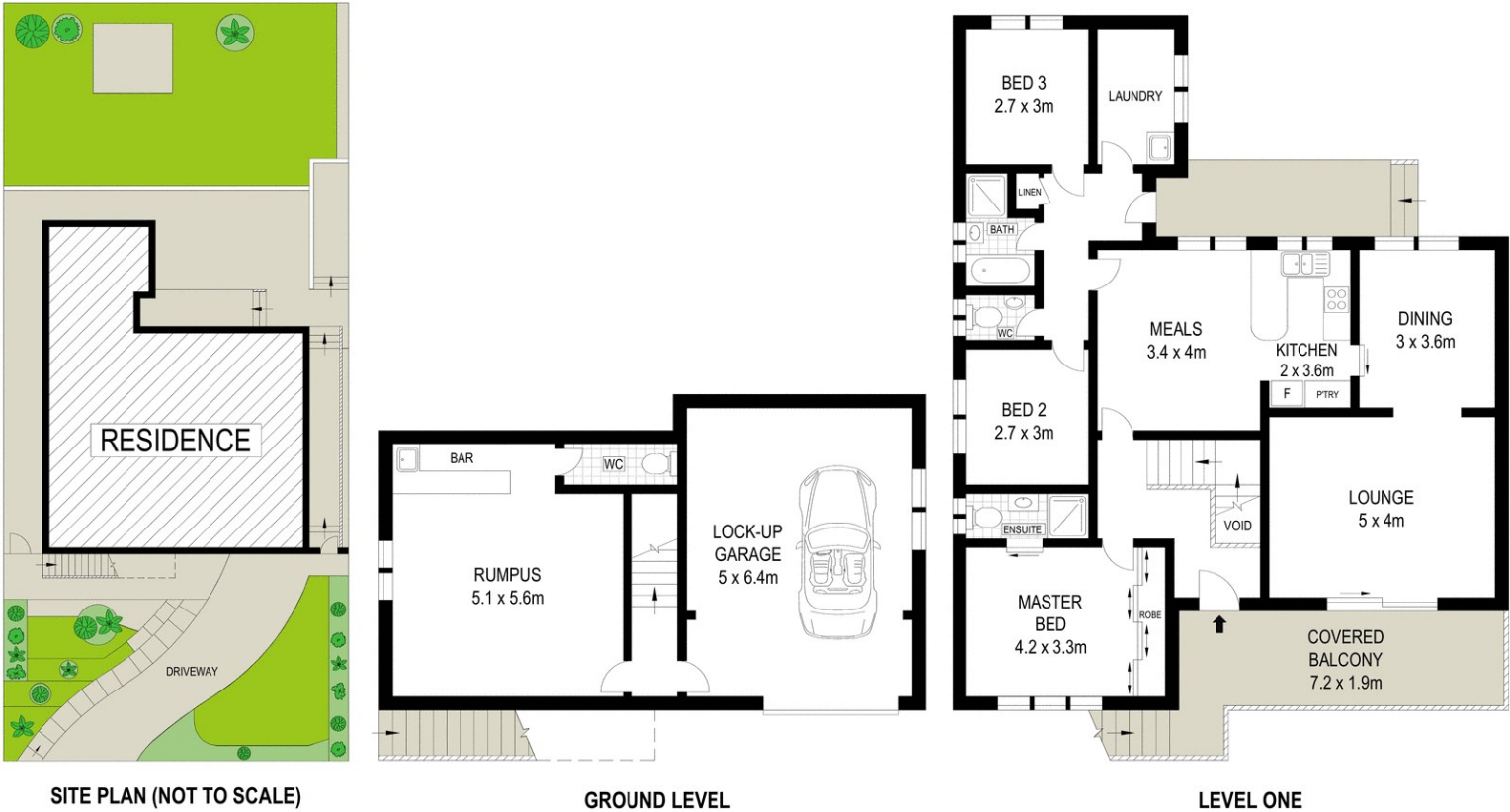
### Listed By

Daniel Frazer

Mobile: 0408 944 434



Floorplan



Scale in metres. Indicative only. Dimensions are approximate. All information contained herein is gathered from sources we believe to be reliable. However we cannot guarantee its accuracy and interested persons should rely on their own enquiries

41 Hopman Crescent, Berkeley

McGrath