

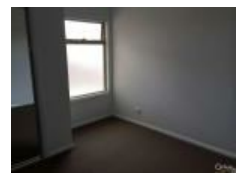



**28 Wall St, Noble Park, VIC 3174****Leased - \$395**Townhouse 3  1  1 **IN THE HEART OF NOBLE PARK!**

\*\* REGISTER TO INSPECT THIS PROPERTY... CLICK CONTACT/EMAIL AGENT \*\*

UNDER APPLICATION

This double story townhouse features: 3 sunny bedrooms with built in robes, open plan living area, modern kitchen with stainless steel appliances including dishwasher, down stairs power room, family bathroom with separate shower and bath, private rear courtyard, ducted heating, evaporative cooling, remote single garage with internal access and glass sliding doors to courtyard (garage includes ducted heating and could be converted to additional living space), additional off street parking for 1 car plus much more. Just a short walk to the Noble Park shopping precinct and train station, close proximity to local schools.

PHOTO ID REQUIRED FOR ALL INSPECTIONS

**Open for Inspection**

By Appointment.

**Listed By**

The Office

Phone: (03) 9547 6777

